



ELECTRONIC COPY

LG792633672
Report verification at igi.org



April 30, 2026
IGI Report Number **LG792633672**
Description **LABORATORY GROWN DIAMOND**
Shape and Cutting Style **TRIANGULAR MODIFIED BRILLIANT**
Measurements **7.11 X 6.76 X 3.52 MM**
GRADING RESULTS
Carat Weight **1.00 CARAT**
Color Grade **FANCY INTENSE YELLOW**
Clarity Grade **VVS 2**

April 30, 2026
IGI Report Number **LG792633672**
Description **LABORATORY GROWN DIAMOND**
Shape and Cutting Style **TRIANGULAR MODIFIED BRILLIANT**
Measurements **7.11 X 6.76 X 3.52 MM**

GRADING RESULTS

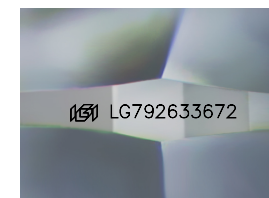
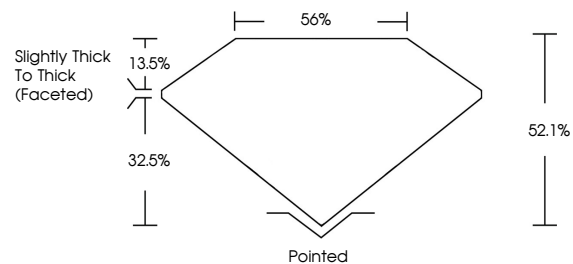
Carat Weight **1.00 CARAT**
Color Grade **FANCY INTENSE YELLOW**
Clarity Grade **VVS 2**

ADDITIONAL GRADING INFORMATION

Polish **VERY GOOD**
Symmetry **VERY GOOD**
Fluorescence **NONE**
Inscription(s) **IGI LG792633672**

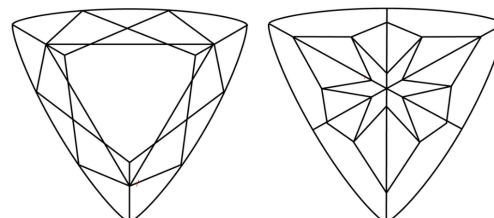
Comments: This Laboratory Grown Diamond was created by Chemical Vapor Deposition (CVD) growth process.

PROPORTIONS



Sample Image Used

CLARITY CHARACTERISTICS



KEY TO SYMBOLS

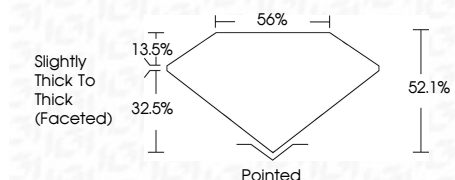
Red symbols indicate internal characteristics.
Green symbols indicate external characteristics.

COLOR

D E F G H I J Faint Very Light Light

CLARITY

FL	IF	VVS ¹⁻²	VS ¹⁻²	SI ¹⁻²	I ¹⁻³
Flawless	Internally Flawless	Very Very Slightly Included	Very Slightly Included	Slightly Included	Included



ADDITIONAL GRADING INFORMATION

Polish **VERY GOOD**
Symmetry **VERY GOOD**
Fluorescence **NONE**
Inscription(s) **IGI LG792633672**
Comments: This Laboratory Grown Diamond was created by Chemical Vapor Deposition (CVD) growth process.



IGI



April 30, 2026
IGI Report No LG792633672
TRIANGULAR MODIFIED BRILLIANT
Carat Weight **1.00 CARAT**
Color Grade **FANCY INTENSE YELLOW**
Clarity Grade **VVS 2**
Depth **62.1%**
Table **56%**
Girdle **Slightly Thick To Thick (Faceted)**
Culet **Pointed**
Polish **VERY GOOD**
Symmetry **VERY GOOD**
Fluorescence **NONE**
Inscription(s) **IGI LG792633672**
Comments: This Laboratory Grown Diamond was created by Chemical Vapor Deposition (CVD) growth process.