



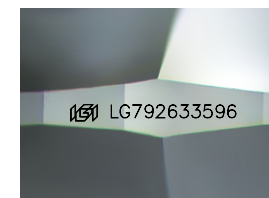
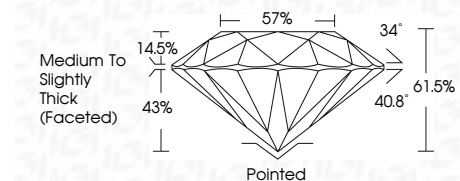
ELECTRONIC COPY

LG792633596 Report verification at igi.org



May 4, 2026 IGI Report Number LG792633596 Description LABORATORY GROWN DIAMOND Shape and Cutting Style ROUND BRILLIANT Measurements 9.25 - 9.29 X 5.70 MM

GRADING RESULTS Carat Weight 3.01 CARATS Color Grade E Clarity Grade VVS 1 Cut Grade IDEAL



Sample Image Used

ADDITIONAL GRADING INFORMATION Polish EXCELLENT Symmetry EXCELLENT Fluorescence NONE Inscription(s) LG792633596 Comments: HEARTS & ARROWS This Laboratory Grown Diamond was created by Chemical Vapor Deposition (CVD) growth process. Type IIa



May 4, 2026 IGI Report No LG792633596 ROUND BRILLIANT 9.25 - 9.29 X 5.70 MM 3.01 CARATS E VVS 1 IDEAL 61.5% 57% Medium To Slightly Thick (Faceted) Pointed EXCELLENT EXCELLENT NONE NONE LG792633596

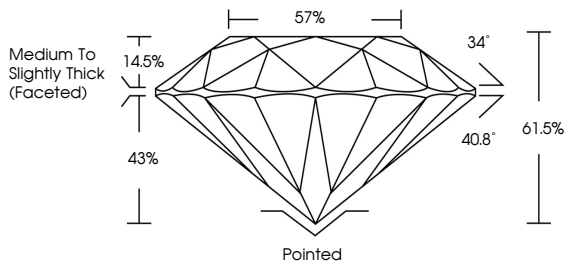
LABORATORY GROWN DIAMOND REPORT

May 4, 2026 IGI Report Number LG792633596 Description LABORATORY GROWN DIAMOND Shape and Cutting Style ROUND BRILLIANT Measurements 9.25 - 9.29 X 5.70 MM GRADING RESULTS Carat Weight 3.01 CARATS Color Grade E Clarity Grade VVS 1 Cut Grade IDEAL

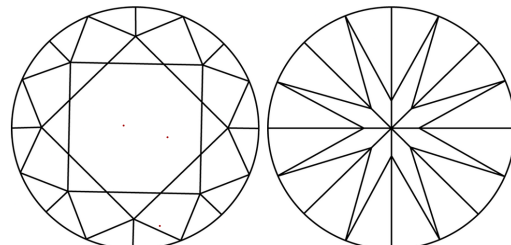
ADDITIONAL GRADING INFORMATION Polish EXCELLENT Symmetry EXCELLENT Fluorescence NONE Inscription(s) LG792633596

Comments: HEARTS & ARROWS This Laboratory Grown Diamond was created by Chemical Vapor Deposition (CVD) growth process. Type IIa

PROPORTIONS



CLARITY CHARACTERISTICS



KEY TO SYMBOLS Red symbols indicate internal characteristics. Green symbols indicate external characteristics.



COLOR

Table with color grades: D, E, F, G, H, I, J, Faint, Very Light, Light

CLARITY

Table with clarity grades: FL, IF, VVS 1-2, VS 1-2, SI 1-2, I 1-3, Flawless, Internally Flawless, Very Very Slightly Included, Very Slightly Included, Slightly Included, Included

