



ELECTRONIC COPY

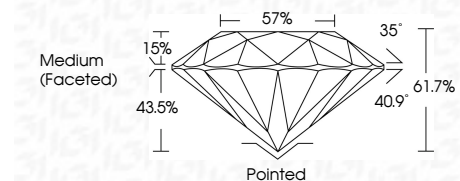
LG792633585
Report verification at igi.org



April 30, 2026
IGI Report Number LG792633585
Description LABORATORY GROWN DIAMOND
Shape and Cutting Style ROUND BRILLIANT
Measurements 8.14 - 8.21 X 5.04 MM

GRADING RESULTS

Carat Weight 2.05 CARATS
Color Grade E
Clarity Grade VVS 2
Cut Grade IDEAL

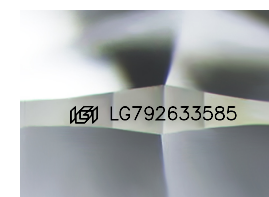


ADDITIONAL GRADING INFORMATION

Polish EXCELLENT
Symmetry EXCELLENT
Fluorescence NONE
Inscription(s) IGI LG792633585
Comments: HEARTS & ARROWS
This Laboratory Grown Diamond was created by Chemical Vapor Deposition (CVD) growth process. Type IIa

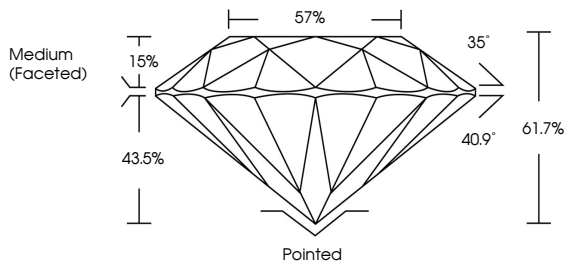


April 30, 2026
IGI Report No LG792633585
ROUND BRILLIANT
8.14 - 8.21 X 5.04 MM
2.05 CARATS
E
VVS 2
IDEAL
61.7%
57%
Medium (Faceted)
Pointed
EXCELLENT
EXCELLENT
NONE
IGI LG792633585
Comments: HEARTS & ARROWS
This Laboratory Grown Diamond was created by Chemical Vapor Deposition (CVD) growth process. Type IIa

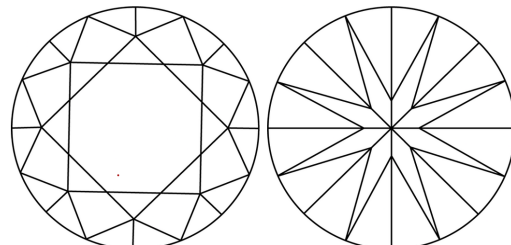


Sample Image Used

PROPORTIONS



CLARITY CHARACTERISTICS



KEY TO SYMBOLS

Red symbols indicate internal characteristics.
Green symbols indicate external characteristics.



COLOR

Table with color grades: D, E, F, G, H, I, J, Faint, Very Light, Light

CLARITY

Table with clarity grades: FL, IF, VVS 1-2, VS 1-2, SI 1-2, I 1-3, Flawless, Internally Flawless, Very Very Slightly Included, Very Slightly Included, Slightly Included, Included

