



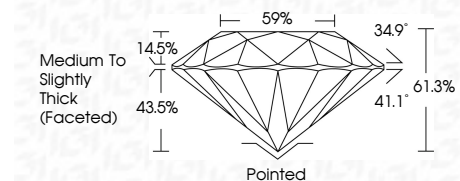
ELECTRONIC COPY

LG792633088 Report verification at igi.org



April 30, 2026 IGI Report Number LG792633088 Description LABORATORY GROWN DIAMOND Shape and Cutting Style ROUND BRILLIANT Measurements 6.61 - 6.65 X 4.07 MM

GRADING RESULTS Carat Weight 1.09 CARAT Color Grade FANCY VIVID PINK Clarity Grade VVS 2 Cut Grade IDEAL



ADDITIONAL GRADING INFORMATION Polish EXCELLENT Symmetry EXCELLENT Fluorescence SLIGHT Inscription(s) IGI LG792633088 Comments: This Laboratory Grown Diamond was created by Chemical Vapor Deposition (CVD) growth process. Indications of post-growth treatment.



April 30, 2026 IGI Report No LG792633088 ROUND BRILLIANT 6.61 - 6.65 X 4.07 MM 1.09 CARAT FANCY VIVID PINK VVS 2 IDEAL 61.3% 59% Medium To Slightly Thick (Faceted) Pointed EXCELLENT EXCELLENT SLIGHT IGI LG792633088 Comments: This Laboratory Grown Diamond was created by Chemical Vapor Deposition (CVD) growth process. Indications of post-growth treatment.

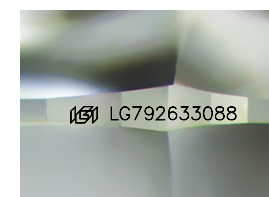
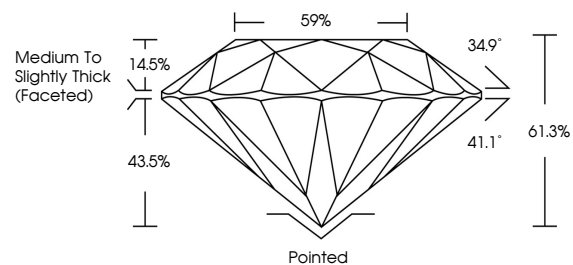
April 30, 2026 IGI Report Number LG792633088 Description LABORATORY GROWN DIAMOND Shape and Cutting Style ROUND BRILLIANT Measurements 6.61 - 6.65 X 4.07 MM

GRADING RESULTS Carat Weight 1.09 CARAT Color Grade FANCY VIVID PINK Clarity Grade VVS 2 Cut Grade IDEAL

ADDITIONAL GRADING INFORMATION Polish EXCELLENT Symmetry EXCELLENT Fluorescence SLIGHT Inscription(s) IGI LG792633088

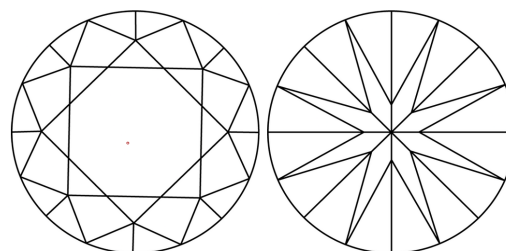
Comments: This Laboratory Grown Diamond was created by Chemical Vapor Deposition (CVD) growth process. Indications of post-growth treatment.

PROPORTIONS



Sample Image Used

CLARITY CHARACTERISTICS



KEY TO SYMBOLS

Red symbols indicate internal characteristics. Green symbols indicate external characteristics.

COLOR

D E F G H I J Faint Very Light Light

CLARITY

FL IF VVS 1-2 VS 1-2 SI 1-2 I 1-3 Flawless Internally Flawless Very Very Slightly Included Very Slightly Included Slightly Included Included

