



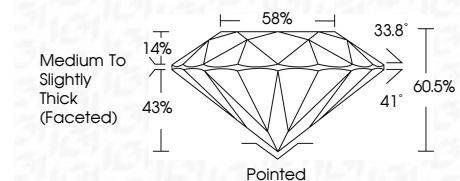
ELECTRONIC COPY

LG792631903 Report verification at igi.org



May 4, 2026 IGI Report Number LG792631903 Description LABORATORY GROWN DIAMOND Shape and Cutting Style ROUND BRILLIANT Measurements 7.47 - 7.50 X 4.52 MM

GRADING RESULTS Carat Weight 1.54 CARAT Color Grade E Clarity Grade VVS 2 Cut Grade IDEAL



ADDITIONAL GRADING INFORMATION Polish EXCELLENT Symmetry EXCELLENT Fluorescence NONE Inscription(s) IGI LG792631903 Comments: This Laboratory Grown Diamond was created by Chemical Vapor Deposition (CVD) growth process. Type IIa



May 4, 2026 IGI Report No LG792631903 ROUND BRILLIANT 7.47 - 7.50 X 4.52 MM 1.54 CARAT E VVS 2 IDEAL 60.5% 58% Medium To Slightly Thick (Faceted) Pointed EXCELLENT EXCELLENT NONE IGI LG792631903 Comments: This Laboratory Grown Diamond was created by Chemical Vapor Deposition (CVD) growth process. Type IIa

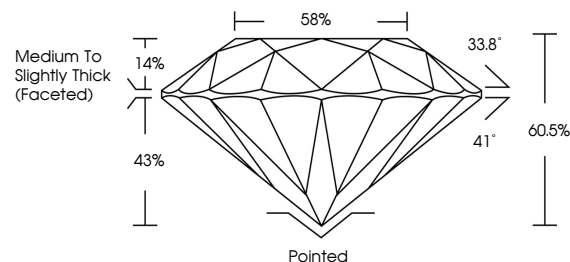
May 4, 2026 IGI Report Number LG792631903 Description LABORATORY GROWN DIAMOND Shape and Cutting Style ROUND BRILLIANT Measurements 7.47 - 7.50 X 4.52 MM

GRADING RESULTS Carat Weight 1.54 CARAT Color Grade E Clarity Grade VVS 2 Cut Grade IDEAL

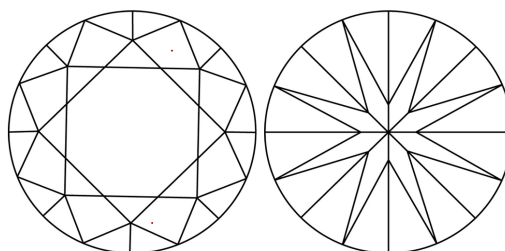
ADDITIONAL GRADING INFORMATION Polish EXCELLENT Symmetry EXCELLENT Fluorescence NONE Inscription(s) IGI LG792631903

Comments: This Laboratory Grown Diamond was created by Chemical Vapor Deposition (CVD) growth process. Type IIa

PROPORTIONS

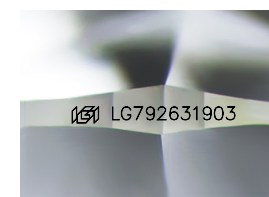


CLARITY CHARACTERISTICS



KEY TO SYMBOLS

Red symbols indicate internal characteristics. Green symbols indicate external characteristics.



Sample Image Used

COLOR

D E F G H I J Faint Very Light Light

CLARITY

FL IF VVS 1-2 VS 1-2 SI 1-2 I 1-3 Flawless Internally Flawless Very Very Slightly Included Very Slightly Included Slightly Included Included

