



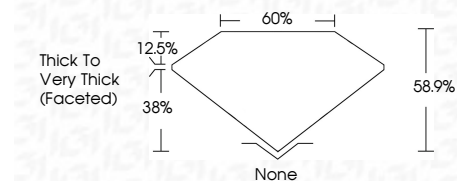
ELECTRONIC COPY

LG792628281
Report verification at igi.org



June 10, 2026
IGI Report Number **LG792628281**
Description **LABORATORY GROWN DIAMOND**
Shape and Cutting Style **HEART MODIFIED BRILLIANT**
Measurements **5.74 X 6.77 X 3.99 MM**

GRADING RESULTS
Carat Weight **1.16 CARAT**
Color Grade **FANCY VIVID PINK**
Clarity Grade **VS 1**



ADDITIONAL GRADING INFORMATION
Polish **VERY GOOD**
Symmetry **VERY GOOD**
Fluorescence **SLIGHT**
Inscription(s) **(IGI) LG792628281**
Comments: This Laboratory Grown Diamond was created by Chemical Vapor Deposition (CVD) growth process. Indications of post-growth treatment.



June 10, 2026
IGI Report No **LG792628281**
HEART MODIFIED BRILLIANT
5.74 X 6.77 X 3.99 MM
1.16 CARAT
FANCY VIVID PINK
VS 1
58.9%
60%
Thick to Very Thick (Faceted)
None
VERY GOOD
VERY GOOD
SLIGHT
(IGI) LG792628281
Comments: This Laboratory Grown Diamond was created by Chemical Vapor Deposition (CVD) growth process. Indications of post-growth treatment.

LABORATORY GROWN DIAMOND REPORT

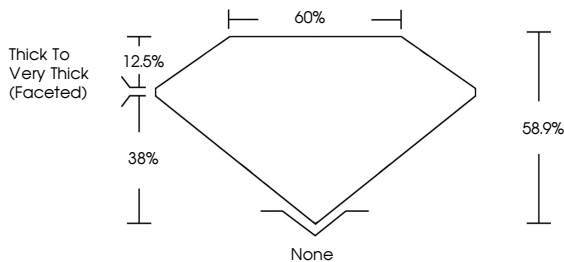
June 10, 2026
IGI Report Number **LG792628281**
Description **LABORATORY GROWN DIAMOND**
Shape and Cutting Style **HEART MODIFIED BRILLIANT**
Measurements **5.74 X 6.77 X 3.99 MM**

GRADING RESULTS
Carat Weight **1.16 CARAT**
Color Grade **FANCY VIVID PINK**
Clarity Grade **VS 1**

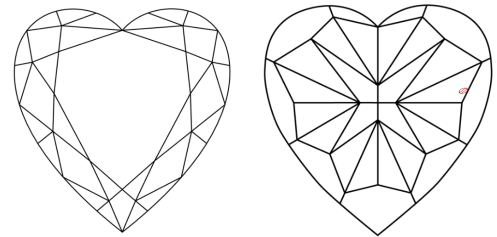
ADDITIONAL GRADING INFORMATION
Polish **VERY GOOD**
Symmetry **VERY GOOD**
Fluorescence **SLIGHT**
Inscription(s) **(IGI) LG792628281**

Comments: This Laboratory Grown Diamond was created by Chemical Vapor Deposition (CVD) growth process. Indications of post-growth treatment.

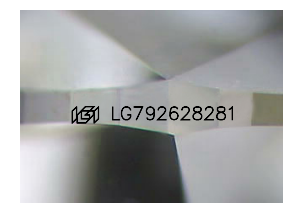
PROPORTIONS



CLARITY CHARACTERISTICS



KEY TO SYMBOLS
Red symbols indicate internal characteristics.
Green symbols indicate external characteristics.



Sample Image Used

COLOR

| | | | | | | | | | |
|---|---|---|---|---|---|---|-------|------------|-------|
| D | E | F | G | H | I | J | Faint | Very Light | Light |
|---|---|---|---|---|---|---|-------|------------|-------|

CLARITY

| | | | | | |
|----------|---------------------|-----------------------------|------------------------|-------------------|------------------|
| FL | IF | VS ¹⁻² | VS ¹⁻² | SI ¹⁻² | I ¹⁻³ |
| Flawless | Internally Flawless | Very Very Slightly Included | Very Slightly Included | Slightly Included | Included |

