



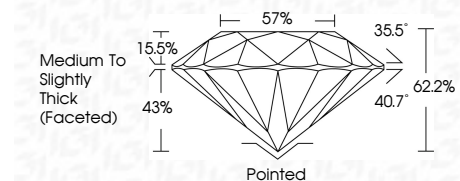
ELECTRONIC COPY

LG792627835 Report verification at igi.org



June 8, 2026 IGI Report Number LG792627835 Description LABORATORY GROWN DIAMOND Shape and Cutting Style ROUND BRILLIANT Measurements 7.32 - 7.35 X 4.57 MM

GRADING RESULTS Carat Weight 1.53 CARAT Color Grade E Clarity Grade VVS 2 Cut Grade IDEAL



ADDITIONAL GRADING INFORMATION Polish EXCELLENT Symmetry EXCELLENT Fluorescence NONE Inscription(s) LG792627835 Comments: This Laboratory Grown Diamond was created by Chemical Vapor Deposition (CVD) growth process. Type IIa



June 8, 2026 IGI Report No LG792627835 ROUND BRILLIANT 7.32 - 7.35 X 4.57 MM 1.53 CARAT E VVS 2 IDEAL 62.2% 57% Medium To Slightly Thick (Faceted) Pointed EXCELLENT EXCELLENT NONE NONE LG792627835

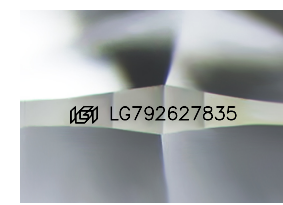
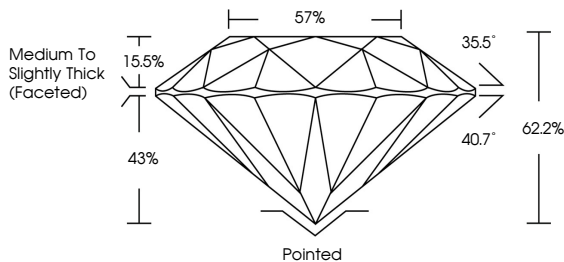
June 8, 2026 IGI Report Number LG792627835 Description LABORATORY GROWN DIAMOND Shape and Cutting Style ROUND BRILLIANT Measurements 7.32 - 7.35 X 4.57 MM

GRADING RESULTS Carat Weight 1.53 CARAT Color Grade E Clarity Grade VVS 2 Cut Grade IDEAL

ADDITIONAL GRADING INFORMATION Polish EXCELLENT Symmetry EXCELLENT Fluorescence NONE Inscription(s) LG792627835

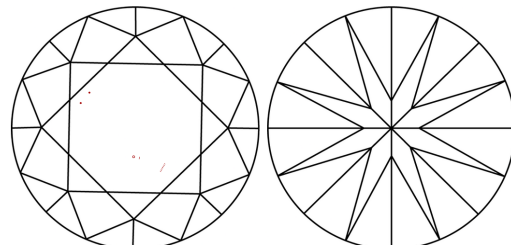
Comments: This Laboratory Grown Diamond was created by Chemical Vapor Deposition (CVD) growth process. Type IIa

PROPORTIONS



Sample Image Used

CLARITY CHARACTERISTICS



KEY TO SYMBOLS Red symbols indicate internal characteristics. Green symbols indicate external characteristics.

COLOR

Color scale from D to J, with Faint, Very Light, and Light labels.

CLARITY

Clarity scale from FL to I 1-3, with sub-labels: Internally Flawless, Very Very Slightly Included, Very Slightly Included, Slightly Included, Included.

