



ELECTRONIC COPY

LG792627159
Report verification at igi.org



June 5, 2026
IGI Report Number LG792627159
Description LABORATORY GROWN DIAMOND
Shape and Cutting Style ROUND MIXED CUT
Measurements 8.10 - 8.09 X 4.76 MM
GRADING RESULTS
Carat Weight 2.10 CARATS
Color Grade FANCY INTENSE PINK
Clarity Grade VS 2

June 5, 2026
IGI Report Number LG792627159
Description LABORATORY GROWN DIAMOND
Shape and Cutting Style ROUND MIXED CUT
Measurements 8.10 - 8.09 X 4.76 MM

GRADING RESULTS

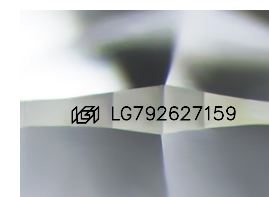
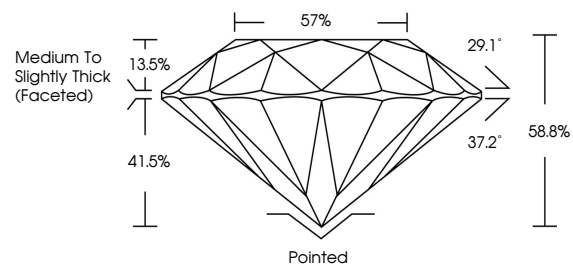
Carat Weight 2.10 CARATS
Color Grade FANCY INTENSE PINK
Clarity Grade VS 2

ADDITIONAL GRADING INFORMATION

Polish EXCELLENT
Symmetry EXCELLENT
Fluorescence SLIGHT
Inscription(s) (IGI) LG792627159

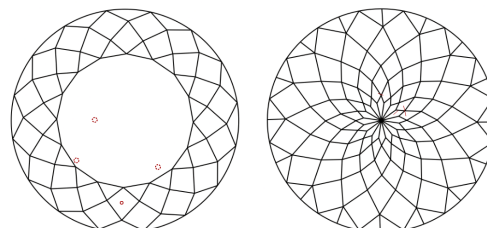
Comments: This Laboratory Grown Diamond was created by Chemical Vapor Deposition (CVD) growth process.
Indications of post-growth treatment.

PROPORTIONS



Sample Image Used

CLARITY CHARACTERISTICS



KEY TO SYMBOLS

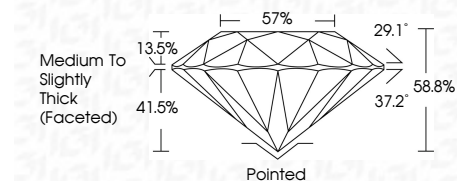
Red symbols indicate internal characteristics.
Green symbols indicate external characteristics.

COLOR

D E F G H I J Faint Very Light Light

CLARITY

Table with columns: FL, IF, VS 1-2, VS 1-2, SI 1-2, I 1-3 and corresponding descriptions: Flawless, Internally Flawless, Very Very Slightly Included, Very Slightly Included, Slightly Included, Included



ADDITIONAL GRADING INFORMATION

Polish EXCELLENT
Symmetry EXCELLENT
Fluorescence SLIGHT
Inscription(s) (IGI) LG792627159
Comments: This Laboratory Grown Diamond was created by Chemical Vapor Deposition (CVD) growth process.
Indications of post-growth treatment.



June 5, 2026
IGI Report No LG792627159
ROUND MIXED CUT
2.10 CARATS
FANCY INTENSE PINK
VS 2
8.10 - 8.09 X 4.76 MM
Color Grade FANCY INTENSE PINK
Clarity Grade VS 2
Depth 68.8%
Table 57%
Girdle Medium to Slightly Thick (Faceted)
Culet Pointed
Polish EXCELLENT
Symmetry EXCELLENT
Fluorescence SLIGHT
Inscription(s) (IGI) LG792627159
Comments: This Laboratory Grown Diamond was created by Chemical Vapor Deposition (CVD) growth process.
Indications of post-growth treatment.