



ELECTRONIC COPY

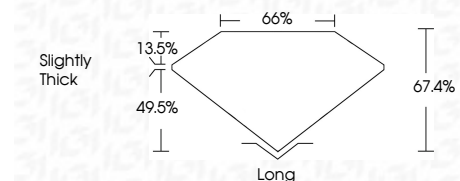
LG792626820
Report verification at igi.org



June 5, 2026
IGI Report Number **LG792626820**
Description **LABORATORY GROWN DIAMOND**
Shape and Cutting Style **EMERALD CUT**
Measurements **8.77 X 5.95 X 4.01 MM**

GRADING RESULTS

Carat Weight **2.01 CARATS**
Color Grade **E**
Clarity Grade **VVS 2**



ADDITIONAL GRADING INFORMATION

Polish **EXCELLENT**
Symmetry **EXCELLENT**
Fluorescence **NONE**
Inscription(s) **IGI LG792626820**
Comments: This Laboratory Grown Diamond was created by Chemical Vapor Deposition (CVD) growth process. Type IIa



June 5, 2026
IGI Report No. LG792626820
EMERALD CUT
2.01 CARATS
E
8.77 X 5.95 X 4.01 MM
Color Grade
VVS 2
Depth 67.4%
Table 65%
Girdle
Slightly Thick
Long
Culet
Polish
Symmetry
Fluorescence
Inscription(s)
EXCELLENT
EXCELLENT
NONE
IGI LG792626820
Comments: This Laboratory Grown Diamond was created by Chemical Vapor Deposition (CVD) growth process. Type IIa

LABORATORY GROWN DIAMOND REPORT

June 5, 2026
IGI Report Number **LG792626820**
Description **LABORATORY GROWN DIAMOND**
Shape and Cutting Style **EMERALD CUT**
Measurements **8.77 X 5.95 X 4.01 MM**

GRADING RESULTS

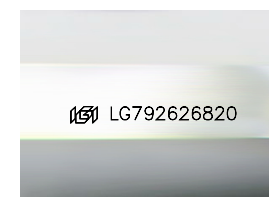
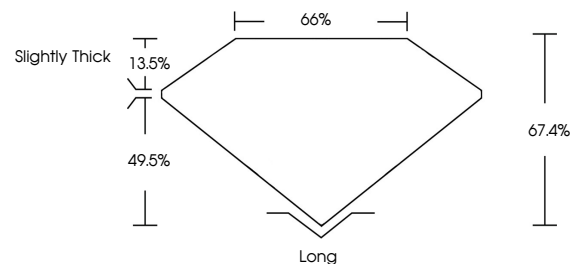
Carat Weight **2.01 CARATS**
Color Grade **E**
Clarity Grade **VVS 2**

ADDITIONAL GRADING INFORMATION

Polish **EXCELLENT**
Symmetry **EXCELLENT**
Fluorescence **NONE**
Inscription(s) **IGI LG792626820**

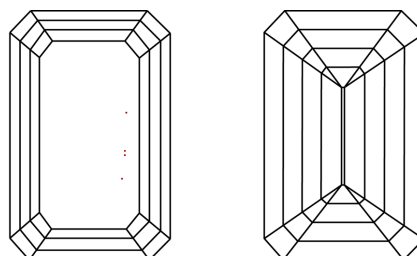
Comments: This Laboratory Grown Diamond was created by Chemical Vapor Deposition (CVD) growth process. Type IIa

PROPORTIONS



Sample Image Used

CLARITY CHARACTERISTICS



KEY TO SYMBOLS

Red symbols indicate internal characteristics.
Green symbols indicate external characteristics.

COLOR

D E F G H I J Faint Very Light Light

CLARITY

FL	IF	VVS ¹⁻²	VS ¹⁻²	SI ¹⁻²	I ¹⁻³
Flawless	Internally Flawless	Very Very Slightly Included	Very Slightly Included	Slightly Included	Included

