



ELECTRONIC COPY

LG792626541
Report verification at igi.org



June 5, 2026
IGI Report Number LG792626541
Description LABORATORY GROWN DIAMOND
Shape and Cutting Style ROUND BRILLIANT
Measurements 7.38 - 7.42 X 4.47 MM
GRADING RESULTS
Carat Weight 1.50 CARAT
Color Grade E
Clarity Grade VVS 1
Cut Grade IDEAL

June 5, 2026
IGI Report Number LG792626541
Description LABORATORY GROWN DIAMOND
Shape and Cutting Style ROUND BRILLIANT
Measurements 7.38 - 7.42 X 4.47 MM

GRADING RESULTS

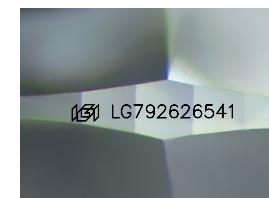
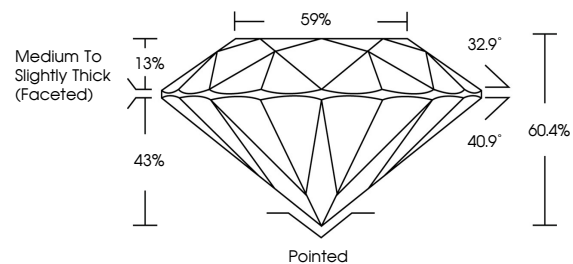
Carat Weight 1.50 CARAT
Color Grade E
Clarity Grade VVS 1
Cut Grade IDEAL

ADDITIONAL GRADING INFORMATION

Polish EXCELLENT
Symmetry EXCELLENT
Fluorescence NONE
Inscription(s) IGI LG792626541

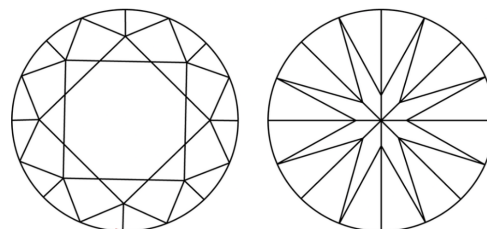
Comments: This Laboratory Grown Diamond was created by Chemical Vapor Deposition (CVD) growth process. Type IIa

PROPORTIONS



Sample Image Used

CLARITY CHARACTERISTICS



KEY TO SYMBOLS

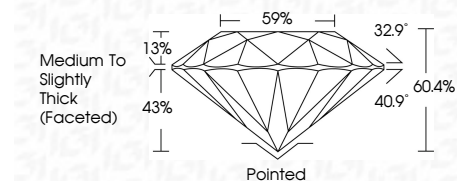
Red symbols indicate internal characteristics.
Green symbols indicate external characteristics.

COLOR

D E F G H I J Faint Very Light Light

CLARITY

FL IF VVS 1-2 VS 1-2 SI 1-2 I 1-3
Flawless Internally Flawless Very Very Slightly Included Very Slightly Included Slightly Included Included



ADDITIONAL GRADING INFORMATION

Polish EXCELLENT
Symmetry EXCELLENT
Fluorescence NONE
Inscription(s) IGI LG792626541
Comments: This Laboratory Grown Diamond was created by Chemical Vapor Deposition (CVD) growth process. Type IIa



June 5, 2026
IGI Report No LG792626541
ROUND BRILLIANT
7.38 - 7.42 X 4.47 MM
1.50 CARAT
E
VVS 1
IDEAL
60.4%
59%
Medium To Slightly Thick (Faceted)
Pointed
EXCELLENT
EXCELLENT
NONE
IGI LG792626541
Comments: This Laboratory Grown Diamond was created by Chemical Vapor Deposition (CVD) growth process. Type IIa