



**ELECTRONIC COPY**

LG792624545  
Report verification at igi.org



April 29, 2026

IGI Report Number **LG792624545**

Description **LABORATORY GROWN DIAMOND**

Shape and Cutting Style **ROUND BRILLIANT**

Measurements **6.55 - 6.57 X 3.89 MM**

**GRADING RESULTS**

Carat Weight **1.01 CARAT**

Color Grade **FANCY LIGHT PINK**

Clarity Grade **VVS 1**

Cut Grade **EXCELLENT**

April 29, 2026  
IGI Report Number **LG792624545**  
Description **LABORATORY GROWN DIAMOND**  
Shape and Cutting Style **ROUND BRILLIANT**  
Measurements **6.55 - 6.57 X 3.89 MM**

**GRADING RESULTS**

Carat Weight **1.01 CARAT**

Color Grade **FANCY LIGHT PINK**

Clarity Grade **VVS 1**

Cut Grade **EXCELLENT**

**ADDITIONAL GRADING INFORMATION**

Polish **EXCELLENT**

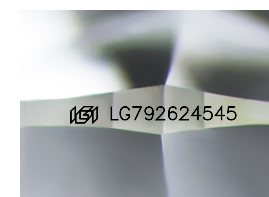
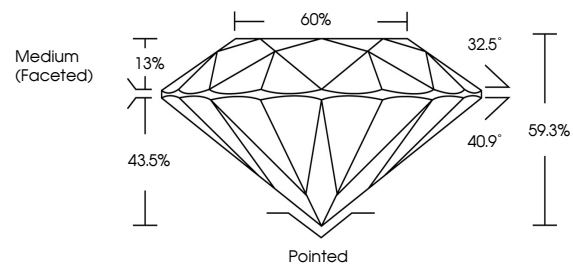
Symmetry **EXCELLENT**

Fluorescence **SLIGHT**

Inscription(s) **IGI LG792624545**

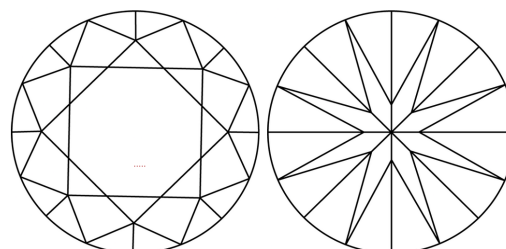
Comments: This Laboratory Grown Diamond was created by Chemical Vapor Deposition (CVD) growth process.  
Type IIa, Indications of post-growth treatment.

**PROPORTIONS**



Sample Image Used

**CLARITY CHARACTERISTICS**



**KEY TO SYMBOLS**

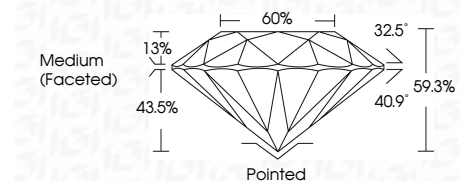
Red symbols indicate internal characteristics.  
Green symbols indicate external characteristics.

**COLOR**

D E F G H I J Faint Very Light Light

**CLARITY**

FL	IF	VVS <sup>1-2</sup>	VS <sup>1-2</sup>	SI <sup>1-2</sup>	I <sup>1-3</sup>
Flawless	Internally Flawless	Very Very Slightly Included	Very Slightly Included	Slightly Included	Included



**ADDITIONAL GRADING INFORMATION**

Polish **EXCELLENT**

Symmetry **EXCELLENT**

Fluorescence **SLIGHT**

Inscription(s) **IGI LG792624545**

Comments: This Laboratory Grown Diamond was created by Chemical Vapor Deposition (CVD) growth process.  
Type IIa, Indications of post-growth treatment.



April 29, 2026  
IGI Report No LG792624545  
**ROUND BRILLIANT**  
6.55 - 6.57 X 3.89 MM  
1.01 CARAT  
FANCY LIGHT PINK  
VVS 1  
EXCELLENT  
EXCELLENT  
Medium (Faceted)

Pointed  
EXCELLENT  
EXCELLENT  
SLIGHT  
IGI LG792624545

Comments: This Laboratory Grown Diamond was created by Chemical Vapor Deposition (CVD) growth process.  
Type IIa, Indications of post-growth treatment.