



ELECTRONIC COPY

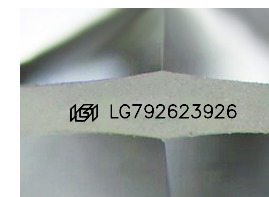
LG792623926
Report verification at igi.org



April 23, 2026
IGI Report Number **LG792623926**
Description **LABORATORY GROWN DIAMOND**

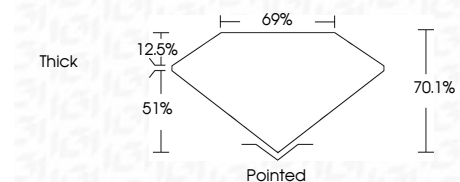
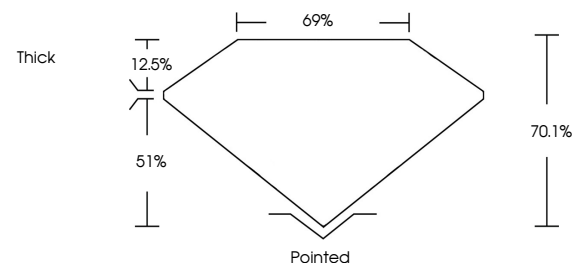
Shape and Cutting Style **PENTAGONAL STEP CUT**
Measurements **8.28 X 5.05 X 3.54 MM**

GRADING RESULTS
Carat Weight **1.05 CARAT**
Color Grade **D**
Clarity Grade **VVS 1**

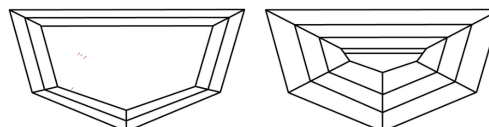


Sample Image Used

PROPORTIONS



CLARITY CHARACTERISTICS



KEY TO SYMBOLS

Red symbols indicate internal characteristics.
Green symbols indicate external characteristics.

COLOR

D E F G H I J Faint Very Light Light

CLARITY

FL	IF	VS ¹⁻²	VS ¹⁻²	SI ¹⁻²	I ¹⁻³
Flawless	Internally Flawless	Very Very Slightly Included	Very Slightly Included	Slightly Included	Included

ADDITIONAL GRADING INFORMATION

Polish **EXCELLENT**
Symmetry **EXCELLENT**
Fluorescence **NONE**
Inscription(s) **IGI LG792623926**
Comments: As Grown - No indication of post-growth treatment.
This Laboratory Grown Diamond was created by High Pressure High Temperature (HPHT) growth process.
Type II



IGI



April 23, 2026
IGI Report No. LG792623926
PENTAGONAL STEP CUT
8.28 X 5.05 X 3.54 MM
Carat Weight 1.05 CARAT
Color Grade D
Clarity Grade VVS 1
Depth 70.1%
Table 69%
Girdle Thick
Culet Pointed
Polish EXCELLENT
Symmetry EXCELLENT
Fluorescence NONE
Inscription(s) IGI LG792623926

Comments: As Grown - No indication of post-growth treatment.
This Laboratory Grown Diamond was created by High Pressure High Temperature (HPHT) growth process.
Type II