



**ELECTRONIC COPY**

LG792623703  
Report verification at igi.org



April 23, 2026

IGI Report Number **LG792623703**

Description **LABORATORY GROWN DIAMOND**

Shape and Cutting Style **PRINCESS CUT**

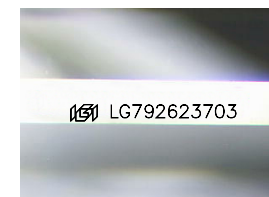
Measurements **7.91 X 7.71 X 5.59 MM**

**GRADING RESULTS**

Carat Weight **3.04 CARATS**

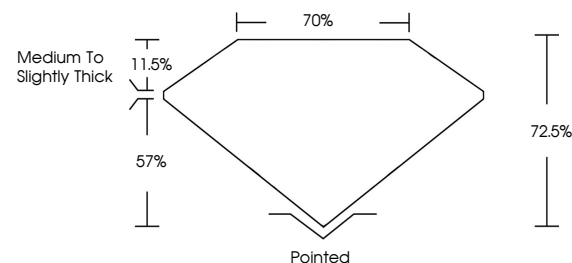
Color Grade **F**

Clarity Grade **VVS 2**

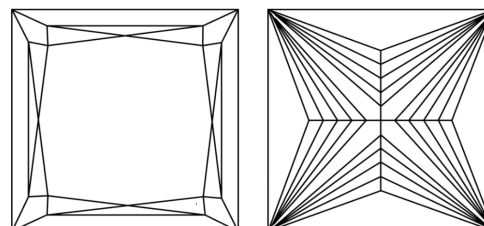


Sample Image Used

**PROPORTIONS**



**CLARITY CHARACTERISTICS**



**KEY TO SYMBOLS**

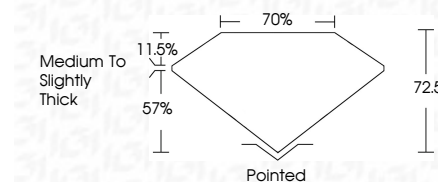
Red symbols indicate internal characteristics.  
Green symbols indicate external characteristics.

**COLOR**

D E F G H I J Faint Very Light Light

**CLARITY**

FL	IF	VVS <sup>1-2</sup>	VS <sup>1-2</sup>	SI <sup>1-2</sup>	I <sup>1-3</sup>
Flawless	Internally Flawless	Very Very Slightly Included	Very Slightly Included	Slightly Included	Included



**ADDITIONAL GRADING INFORMATION**

Polish **EXCELLENT**

Symmetry **EXCELLENT**

Fluorescence **NONE**

Inscription(s) **IGI LG792623703**

Comments: This Laboratory Grown Diamond was created by Chemical Vapor Deposition (CVD) growth process. Type IIa



**IGI**



April 23, 2026  
IGI Report No. LG792623703  
PRINCESS CUT

3.04 CARATS  
F

7.91 X 7.71 X 5.59 MM  
72.5%  
70%  
Medium to Slightly Thick

VVS 2  
None

Pointed  
EXCELLENT  
EXCELLENT  
NONE  
IGI LG792623703

Culet  
Polish  
Symmetry  
Fluorescence  
Inscription(s)

Comments: This Laboratory Grown Diamond was created by Chemical Vapor Deposition (CVD) growth process. Type IIa