



**ELECTRONIC COPY**

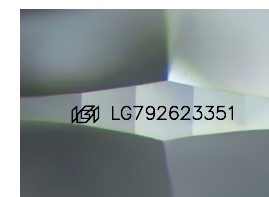
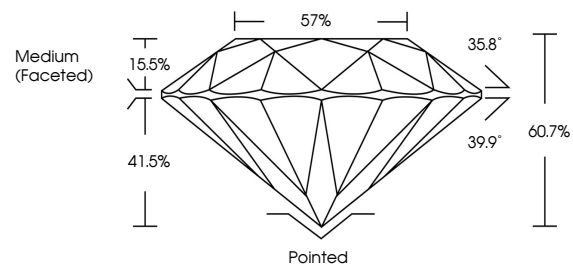
LG792623351  
Report verification at [igi.org](http://igi.org)



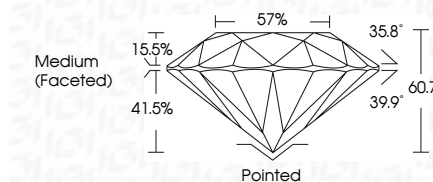
April 29, 2026  
IGI Report Number **LG792623351**  
Description **LABORATORY GROWN DIAMOND**  
Shape and Cutting Style **ROUND BRILLIANT**  
Measurements **8.50 - 8.53 X 5.17 MM**  
**GRADING RESULTS**  
Carat Weight **2.31 CARATS**  
Color Grade **H**  
Clarity Grade **VS 1**  
Cut Grade **VERY GOOD**

April 29, 2026  
IGI Report Number **LG792623351**  
Description **LABORATORY GROWN DIAMOND**  
Shape and Cutting Style **ROUND BRILLIANT**  
Measurements **8.50 - 8.53 X 5.17 MM**  
**GRADING RESULTS**  
Carat Weight **2.31 CARATS**  
Color Grade **H**  
Clarity Grade **VS 1**  
Cut Grade **VERY GOOD**

**PROPORTIONS**



Sample Image Used



**ADDITIONAL GRADING INFORMATION**

Polish **EXCELLENT**  
Symmetry **EXCELLENT**  
Fluorescence **NONE**  
Inscription(s) **IGI LG792623351**

Comments: This Laboratory Grown Diamond was created by Chemical Vapor Deposition (CVD) growth process. Type IIa

**ADDITIONAL GRADING INFORMATION**

Polish **EXCELLENT**  
Symmetry **EXCELLENT**  
Fluorescence **NONE**  
Inscription(s) **IGI LG792623351**  
Comments: This Laboratory Grown Diamond was created by Chemical Vapor Deposition (CVD) growth process. Type IIa

**COLOR**

D E F G H I J Faint Very Light Light

**CLARITY**

FL	IF	VS <sup>1-2</sup>	VS <sup>1-2</sup>	SI <sup>1-2</sup>	I <sup>1-3</sup>
Flawless	Internally Flawless	Very Very Slightly Included	Very Slightly Included	Slightly Included	Included



**IGI**



April 29, 2026  
IGI Report No LG792623351  
**ROUND BRILLIANT**  
8.50 - 8.53 X 5.17 MM  
2.31 CARATS  
H  
2.31 CARATS  
H  
VS 1  
VERY GOOD  
60.7%  
57%  
Medium (Faceted)  
Pointed  
EXCELLENT  
EXCELLENT  
NONE  
IGI LG792623351  
Comments: This Laboratory Grown Diamond was created by Chemical Vapor Deposition (CVD) growth process. Type IIa