



**ELECTRONIC COPY**

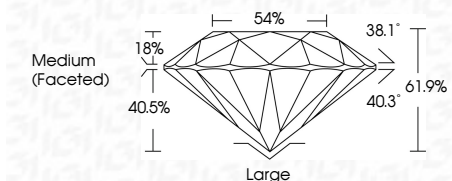
LG792623100  
Report verification at igi.org



June 8, 2026  
IGI Report Number **LG792623100**  
Description **LABORATORY GROWN DIAMOND**  
Shape and Cutting Style **OLD EUROPEAN CUT**  
Measurements **6.32 - 6.39 X 3.93 MM**

**GRADING RESULTS**

Carat Weight **1.02 CARAT**  
Color Grade **D**  
Clarity Grade **VVS 2**



**ADDITIONAL GRADING INFORMATION**

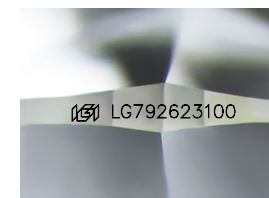
Polish **EXCELLENT**  
Symmetry **EXCELLENT**  
Fluorescence **NONE**  
Inscription(s) **IGI LG792623100**  
Comments: As Grown - No indication of post-growth treatment.  
This Laboratory Grown Diamond was created by High Pressure High Temperature (HPHT) growth process.  
Type II



**IGI**

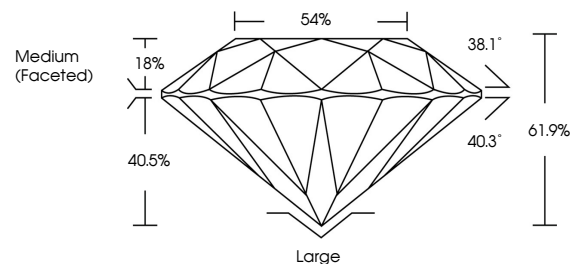
June 8, 2026  
IGI Report No. **LG792623100**  
**OLD EUROPEAN CUT**  
Carat Weight **1.02 CARAT**  
Color Grade **D**  
Clarity Grade **VVS 2**  
Depth **61.9%**  
Table **54%**  
Girdle **Medium (Faceted)**  
Culet **Large**  
Polish **EXCELLENT**  
Symmetry **EXCELLENT**  
Fluorescence **NONE**  
Inscription(s) **IGI LG792623100**

Comments: As Grown - No indication of post-growth treatment.  
This Laboratory Grown Diamond was created by High Pressure High Temperature (HPHT) growth process.  
Type II

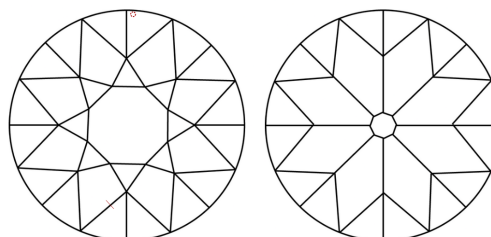


Sample Image Used

**PROPORTIONS**



**CLARITY CHARACTERISTICS**



**KEY TO SYMBOLS**

Red symbols indicate internal characteristics.  
Green symbols indicate external characteristics.

**COLOR**

D E F G H I J Faint Very Light Light

**CLARITY**

FL	IF	VVS <sup>1-2</sup>	VS <sup>1-2</sup>	SI <sup>1-2</sup>	I <sup>1-3</sup>
Flawless	Internally Flawless	Very Very Slightly Included	Very Slightly Included	Slightly Included	Included

