



June 8, 2026

IGI Report Number LG792623091
HALF MOON STEP CUT
LABORATORY GROWN DIAMOND
6.88 X 4.53 X 3.11 MM
0.70 CARAT
D
VVS 1
EXCELLENT
EXCELLENT
NONE
IGI LG792623091

LABORATORY GROWN DIAMOND REPORT

June 8, 2026
 IGI Report Number **LG792623091**
 Description **LABORATORY GROWN DIAMOND**
 Shape and Cutting Style **HALF MOON STEP CUT**
 Measurements **6.88 X 4.53 X 3.11 MM**

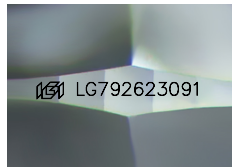
GRADING RESULTS

Carat Weight **0.70 CARAT**
 Color Grade **D**
 Clarity Grade **VVS 1**

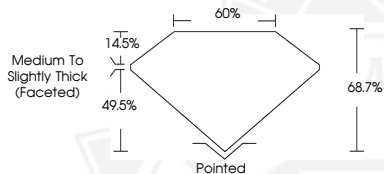
ADDITIONAL GRADING INFORMATION

Polish **EXCELLENT**
 Symmetry **EXCELLENT**
 Fluorescence **NONE**
 Inscription(s) **IGI LG792623091**

Comments: As Grown - No indication of post-growth treatment. This Laboratory Grown Diamond was created by High Pressure High Temperature (HPHT) growth process. Type II



Sample Image Used



June 8, 2026

IGI Report Number LG792623091
HALF MOON STEP CUT
LABORATORY GROWN DIAMOND
6.88 X 4.53 X 3.11 MM
0.70 CARAT
D
VVS 1
EXCELLENT
EXCELLENT
NONE
IGI LG792623091

Comments: As Grown - No indication of post-growth treatment. This Laboratory Grown Diamond was created by High Pressure High Temperature (HPHT) growth process. Type II



THIS DOCUMENT WAS PRODUCED WITH THE FOLLOWING SECURITY MEASURES: SPECIAL DOCUMENT PAPER, INK SCREENS, WATERMARK, BACKGROUND DESIGNS, HOLOGRAM AND OTHER SECURITY FEATURES NOT LISTED AND DO EXCEED DOCUMENT SECURITY INDUSTRY GUIDELINES.