



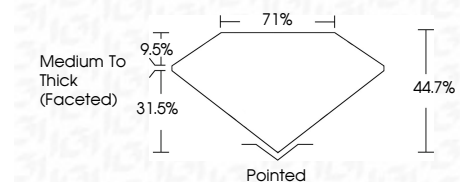
ELECTRONIC COPY

LG792623088
Report verification at igi.org



June 9, 2026
IGI Report Number **LG792623088**
Description **LABORATORY GROWN DIAMOND**
Shape and Cutting Style **HALF MOON STEP CUT**
Measurements **6.00 X 8.80 X 3.93 MM**

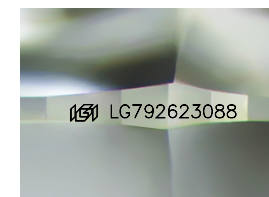
GRADING RESULTS
Carat Weight **1.56 CARAT**
Color Grade **D**
Clarity Grade **VVS 1**



ADDITIONAL GRADING INFORMATION
Polish **EXCELLENT**
Symmetry **EXCELLENT**
Fluorescence **NONE**
Inscription(s) **IGI LG792623088**
Comments: As Grown - No indication of post-growth treatment.
This Laboratory Grown Diamond was created by High Pressure High Temperature (HPHT) growth process.
Type II

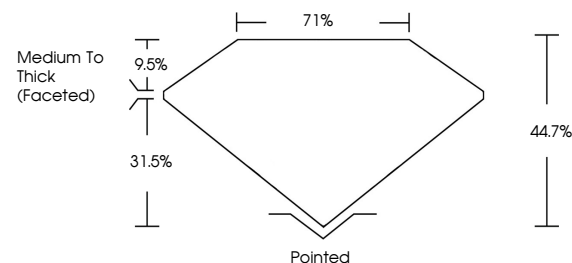


June 9, 2026
IGI Report No **LG792623088**
HALF MOON STEP CUT
6.00 X 8.80 X 3.93 MM
Carat Weight **1.56 CARAT**
Color Grade **D**
Clarity Grade **VVS 1**
Depth **44.7%**
Table **71%**
Girdle **Medium To Thick (Faceted)**
Culet **Pointed**
Polish **EXCELLENT**
Symmetry **EXCELLENT**
Fluorescence **NONE**
Inscription(s) **IGI LG792623088**
Comments: As Grown - No indication of post-growth treatment.
This Laboratory Grown Diamond was created by High Pressure High Temperature (HPHT) growth process.
Type II

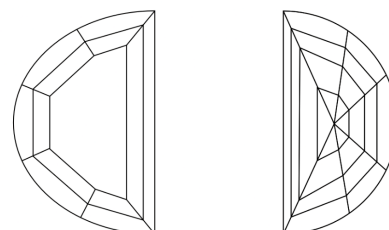


Sample Image Used

PROPORTIONS



CLARITY CHARACTERISTICS



KEY TO SYMBOLS

Red symbols indicate internal characteristics.
Green symbols indicate external characteristics.

COLOR

D E F G H I J Faint Very Light Light

CLARITY

FL	IF	VVS ¹⁻²	VS ¹⁻²	SI ¹⁻²	I ¹⁻³
Flawless	Internally Flawless	Very Very Slightly Included	Very Slightly Included	Slightly Included	Included

