



June 4, 2026

IGI Report Number **LG792622961**

**OVAL BRILLIANT  
LABORATORY GROWN DIAMOND  
7.31 X 5.12 X 3.10 MM**

Carat Weight **0.73 CARAT**  
Color Grade **D**  
Clarity Grade **VVS 2**  
Polish **EXCELLENT**  
Symmetry **EXCELLENT**  
Fluorescence **NONE**  
Inscription(s) **IGI LG792622961**

Comments: As Grown - No indication of post-growth treatment. This Laboratory Grown Diamond was created by High Pressure High Temperature (HPHT) growth process. Type II

**LABORATORY GROWN DIAMOND REPORT**

June 4, 2026  
IGI Report Number **LG792622961**  
Description **LABORATORY GROWN DIAMOND**  
Shape and Cutting Style **OVAL BRILLIANT**  
Measurements **7.31 X 5.12 X 3.10 MM**

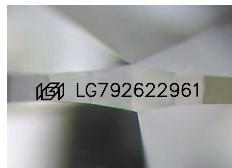
**GRADING RESULTS**

Carat Weight **0.73 CARAT**  
Color Grade **D**  
Clarity Grade **VVS 2**

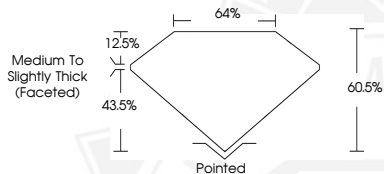
**ADDITIONAL GRADING INFORMATION**

Polish **EXCELLENT**  
Symmetry **EXCELLENT**  
Fluorescence **NONE**  
Inscription(s) **IGI LG792622961**

Comments: As Grown - No indication of post-growth treatment. This Laboratory Grown Diamond was created by High Pressure High Temperature (HPHT) growth process. Type II



Sample Image Used



June 4, 2026

IGI Report Number **LG792622961**

**OVAL BRILLIANT  
LABORATORY GROWN DIAMOND  
7.31 X 5.12 X 3.10 MM**

Carat Weight **0.73 CARAT**  
Color Grade **D**  
Clarity Grade **VVS 2**  
Polish **EXCELLENT**  
Symmetry **EXCELLENT**  
Fluorescence **NONE**  
Inscription(s) **IGI LG792622961**

Comments: As Grown - No indication of post-growth treatment. This Laboratory Grown Diamond was created by High Pressure High Temperature (HPHT) growth process. Type II



THIS DOCUMENT WAS PRODUCED WITH THE FOLLOWING SECURITY MEASURES: SPECIAL DOCUMENT PAPER, INK SCREENS, WATERMARK, BACKGROUND DESIGNS, HOLOGRAM AND OTHER SECURITY FEATURES NOT LISTED AND DO EXCEED DOCUMENT SECURITY INDUSTRY GUIDELINES.