



LABORATORY GROWN DIAMOND REPORT

June 4, 2026
 IGI Report Number **LG792622847**
 Description **LABORATORY GROWN DIAMOND**
 Shape and Cutting Style **HALF MOON STEP CUT**
 Measurements **5.08 X 7.50 X 2.99 MM**

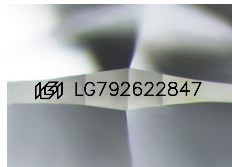
GRADING RESULTS

Carat Weight **0.82 CARAT**
 Color Grade **D**
 Clarity Grade **VVS 1**

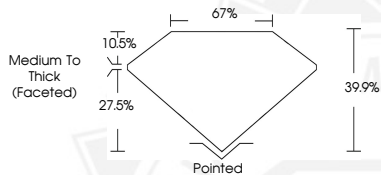
ADDITIONAL GRADING INFORMATION

Polish **EXCELLENT**
 Symmetry **EXCELLENT**
 Fluorescence **NONE**
 Inscription(s) **IGI LG792622847**

Comments: As Grown - No indication of post-growth treatment.
 This Laboratory Grown Diamond was created by High Pressure High Temperature (HPHT) growth process.
 Type II



Sample Image Used



June 4, 2026
 IGI Report Number **LG792622847**
 HALF MOON STEP CUT
 LABORATORY GROWN DIAMOND
 5.08 X 7.50 X 2.99 MM
 Carat Weight **0.82 CARAT**
 Color Grade **D**
 Clarity Grade **VVS 1**
 Polish **EXCELLENT**
 Symmetry **EXCELLENT**
 Fluorescence **NONE**
 Inscription(s) **IGI LG792622847**

Comments: As Grown - No indication of post-growth treatment. This Laboratory Grown Diamond was created by High Pressure High Temperature (HPHT) growth process. Type II



June 4, 2026
 IGI Report Number **LG792622847**
 HALF MOON STEP CUT
 LABORATORY GROWN DIAMOND
 5.08 X 7.50 X 2.99 MM
 Carat Weight **0.82 CARAT**
 Color Grade **D**
 Clarity Grade **VVS 1**
 Polish **EXCELLENT**
 Symmetry **EXCELLENT**
 Fluorescence **NONE**
 Inscription(s) **IGI LG792622847**

Comments: As Grown - No indication of post-growth treatment. This Laboratory Grown Diamond was created by High Pressure High Temperature (HPHT) growth process. Type II



THIS DOCUMENT WAS PRODUCED WITH THE FOLLOWING SECURITY MEASURES: SPECIAL DOCUMENT PAPER, INK SCREENS, WATERMARK, BACKGROUND DESIGNS, HOLOGRAM AND OTHER SECURITY FEATURES NOT LISTED AND DO EXCEED DOCUMENT SECURITY INDUSTRY GUIDELINES.