



June 2, 2026

IGI Report Number **LG792622774**

**PEAR BRILLIANT**

**LABORATORY GROWN DIAMOND**

**7.74 X 5.03 X 3.07 MM**

Carat Weight **0.70 CARAT**

Color Grade **D**

Clarity Grade **VVS 2**

Polish **EXCELLENT**

Symmetry **EXCELLENT**

Fluorescence **NONE**

Inscription(s) **IGI LG792622774**

Comments: As Grown - No indication of post-growth treatment. This Laboratory Grown Diamond was created by High Pressure High Temperature (HPHT) growth process. Type II

**LABORATORY GROWN DIAMOND REPORT**

June 2, 2026  
IGI Report Number **LG792622774**  
Description **LABORATORY GROWN DIAMOND**  
Shape and Cutting Style **PEAR BRILLIANT**  
Measurements **7.74 X 5.03 X 3.07 MM**

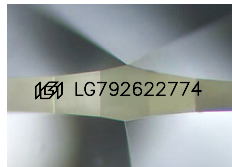
**GRADING RESULTS**

Carat Weight **0.70 CARAT**  
Color Grade **D**  
Clarity Grade **VVS 2**

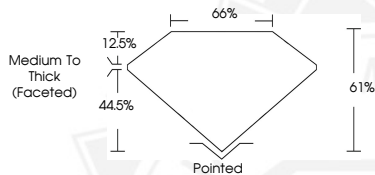
**ADDITIONAL GRADING INFORMATION**

Polish **EXCELLENT**  
Symmetry **EXCELLENT**  
Fluorescence **NONE**  
Inscription(s) **IGI LG792622774**

Comments: As Grown - No indication of post-growth treatment. This Laboratory Grown Diamond was created by High Pressure High Temperature (HPHT) growth process. Type II



Sample Image Used



June 2, 2026

IGI Report Number **LG792622774**

**PEAR BRILLIANT**

**LABORATORY GROWN DIAMOND**

**7.74 X 5.03 X 3.07 MM**

Carat Weight **0.70 CARAT**

Color Grade **D**

Clarity Grade **VVS 2**

Polish **EXCELLENT**

Symmetry **EXCELLENT**

Fluorescence **NONE**

Inscription(s) **IGI LG792622774**

Comments: As Grown - No indication of post-growth treatment. This Laboratory Grown Diamond was created by High Pressure High Temperature (HPHT) growth process. Type II



THIS DOCUMENT WAS PRODUCED WITH THE FOLLOWING SECURITY MEASURES: SPECIAL DOCUMENT PAPER, INK SCREENS, WATERMARK, BACKGROUND DESIGNS, HOLOGRAM AND OTHER SECURITY FEATURES NOT LISTED AND DO EXCEED DOCUMENT SECURITY INDUSTRY GUIDELINES.