



May 28, 2026

IGI Report Number LG792622711
OLD EUROPEAN CUT
LABORATORY GROWN DIAMOND
5.94 - 5.97 X 3.63 MM
0.82 CARAT
D
VVS 2
EXCELLENT
EXCELLENT
NONE
IGI LG792622711

LABORATORY GROWN DIAMOND REPORT

May 28, 2026
 IGI Report Number **LG792622711**
 Description **LABORATORY GROWN DIAMOND**
 Shape and Cutting Style **OLD EUROPEAN CUT**
 Measurements **5.94 - 5.97 X 3.63 MM**

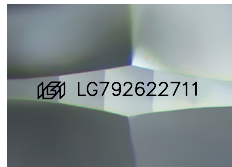
GRADING RESULTS

Carat Weight **0.82 CARAT**
 Color Grade **D**
 Clarity Grade **VVS 2**

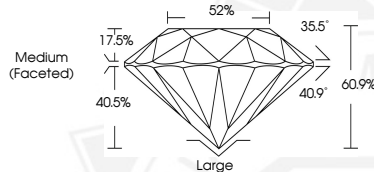
ADDITIONAL GRADING INFORMATION

Polish **EXCELLENT**
 Symmetry **EXCELLENT**
 Fluorescence **NONE**
 Inscription(s) **IGI LG792622711**

Comments: As Grown - No indication of post-growth treatment.
 This Laboratory Grown Diamond was created by High Pressure High Temperature (HPHT) growth process.
 Type II



Sample Image Used



May 28, 2026

IGI Report Number LG792622711
OLD EUROPEAN CUT
LABORATORY GROWN DIAMOND
5.94 - 5.97 X 3.63 MM
0.82 CARAT
D
VVS 2
EXCELLENT
EXCELLENT
NONE
IGI LG792622711

Comments: As Grown - No indication of post-growth treatment. This Laboratory Grown Diamond was created by High Pressure High Temperature (HPHT) growth process. Type II



THIS DOCUMENT WAS PRODUCED WITH THE FOLLOWING SECURITY MEASURES: SPECIAL DOCUMENT PAPER, INK SCREENS, WATERMARK, BACKGROUND DESIGNS, HOLOGRAM AND OTHER SECURITY FEATURES NOT LISTED AND DO EXCEED DOCUMENT SECURITY INDUSTRY GUIDELINES.