



May 28, 2026

IGI Report Number **LG792622710**

**OLD EUROPEAN CUT**

**LABORATORY GROWN DIAMOND**

**6.17 - 6.21 X 3.79 MM**

Carat Weight **0.93 CARAT**

Color Grade **D**

Clarity Grade **VVS 1**

Polish **EXCELLENT**

Symmetry **EXCELLENT**

Fluorescence **NONE**

Inscription(s) **IGI LG792622710**

Comments: As Grown - No indication of post-growth treatment. This Laboratory Grown Diamond was created by High Pressure High Temperature (HPHT) growth process. Type II

**LABORATORY GROWN DIAMOND REPORT**

May 28, 2026

IGI Report Number

**LG792622710**

Description

**LABORATORY GROWN DIAMOND**

Shape and Cutting Style

**OLD EUROPEAN CUT**

Measurements

**6.17 - 6.21 X 3.79 MM**

**GRADING RESULTS**

Carat Weight

**0.93 CARAT**

Color Grade

**D**

Clarity Grade

**VVS 1**

**ADDITIONAL GRADING INFORMATION**

Polish

**EXCELLENT**

Symmetry

**EXCELLENT**

Fluorescence

**NONE**

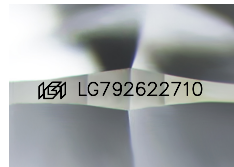
Inscription(s)

**IGI LG792622710**

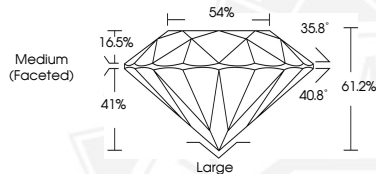
Comments: As Grown - No indication of post-growth treatment.

This Laboratory Grown Diamond was created by High Pressure High Temperature (HPHT) growth process.

Type II



Sample Image Used



May 28, 2026

IGI Report Number **LG792622710**

**OLD EUROPEAN CUT**

**LABORATORY GROWN DIAMOND**

**6.17 - 6.21 X 3.79 MM**

Carat Weight **0.93 CARAT**

Color Grade **D**

Clarity Grade **VVS 1**

Polish **EXCELLENT**

Symmetry **EXCELLENT**

Fluorescence **NONE**

Inscription(s) **IGI LG792622710**

Comments: As Grown - No indication of post-growth treatment. This Laboratory Grown Diamond was created by High Pressure High Temperature (HPHT) growth process. Type II



THIS DOCUMENT WAS PRODUCED WITH THE FOLLOWING SECURITY MEASURES: SPECIAL DOCUMENT PAPER, INK SCREENS, WATERMARK, BACKGROUND DESIGNS, HOLOGRAM AND OTHER SECURITY FEATURES NOT LISTED AND DO EXCEED DOCUMENT SECURITY INDUSTRY GUIDELINES.