



ELECTRONIC COPY

LG792622674
Report verification at igi.org



May 29, 2026
IGI Report Number **LG792622674**

Description **LABORATORY GROWN DIAMOND**

Shape and Cutting Style **CUT CORNERED
RECTANGULAR MODIFIED
BRILLIANT**

Measurements **8.36 X 6.74 X 5.05 MM**

GRADING RESULTS

Carat Weight **2.71 CARATS**

Color Grade **FANCY DEEP GRAY**

Clarity Grade **VS 2**

LABORATORY GROWN DIAMOND REPORT

May 29, 2026

IGI Report Number **LG792622674**

Description **LABORATORY GROWN DIAMOND**

Shape and Cutting Style **CUT CORNERED RECTANGULAR
MODIFIED BRILLIANT**

Measurements **8.36 X 6.74 X 5.05 MM**

GRADING RESULTS

Carat Weight **2.71 CARATS**

Color Grade **FANCY DEEP GRAY**

Clarity Grade **VS 2**

ADDITIONAL GRADING INFORMATION

Polish **EXCELLENT**

Symmetry **EXCELLENT**

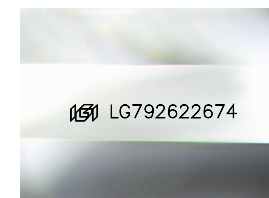
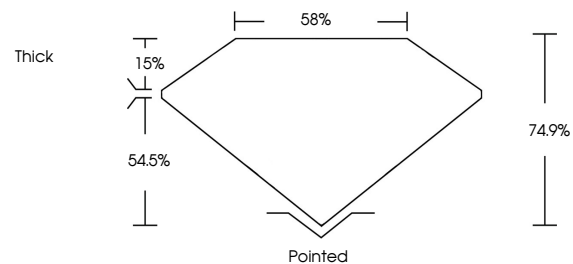
Fluorescence **NONE**

Inscription(s) **IGI LG792622674**

Comments: This Laboratory Grown Diamond was created by Chemical Vapor Deposition (CVD) growth process.

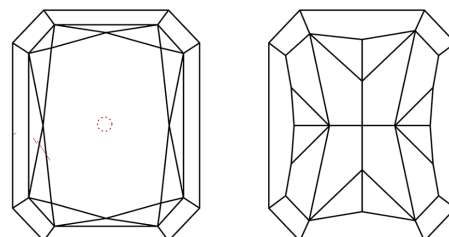
Indications of post-growth treatment.

PROPORTIONS



Sample Image Used

CLARITY CHARACTERISTICS



KEY TO SYMBOLS

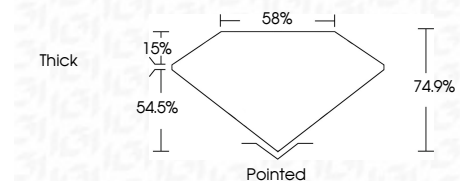
Red symbols indicate internal characteristics.
Green symbols indicate external characteristics.

COLOR

D E F G H I J Faint Very Light Light

CLARITY

FL	IF	VS ¹⁻²	VS ¹⁻²	SI ¹⁻²	I ¹⁻³
Flawless	Internally Flawless	Very Very Slightly Included	Very Slightly Included	Slightly Included	Included



ADDITIONAL GRADING INFORMATION

Polish **EXCELLENT**

Symmetry **EXCELLENT**

Fluorescence **NONE**

Inscription(s) **IGI LG792622674**

Comments: This Laboratory Grown Diamond was created by Chemical Vapor Deposition (CVD) growth process. Indications of post-growth treatment.



IGI



May 29, 2026
IGI Report No LG792622674
CUT CORNERED RECT. MODIFIED BRILLIANT
8.36 X 6.74 X 5.05 MM
2.71 CARATS
FANCY DEEP GRAY
VS 2
74.9%
58%
Thick
Pointed
EXCELLENT
EXCELLENT
NONE
IGI LG792622674
Comments: This Laboratory Grown Diamond was created by Chemical Vapor Deposition (CVD) growth process. Indications of post-growth treatment.