



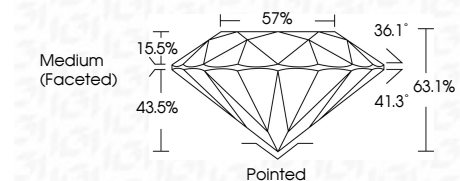
**ELECTRONIC COPY**

LG792621726  
Report verification at igi.org



April 27, 2026  
IGI Report Number **LG792621726**  
Description **LABORATORY GROWN DIAMOND**  
Shape and Cutting Style **ROUND BRILLIANT**  
Measurements **8.05 - 8.08 X 5.09 MM**

**GRADING RESULTS**  
Carat Weight **2.04 CARATS**  
Color Grade **F**  
Clarity Grade **VS 1**  
Cut Grade **EXCELLENT**



**ADDITIONAL GRADING INFORMATION**  
Polish **EXCELLENT**  
Symmetry **EXCELLENT**  
Fluorescence **NONE**  
Inscription(s) **IGI LG792621726**  
Comments: This Laboratory Grown Diamond was created by Chemical Vapor Deposition (CVD) growth process. Type IIa



April 27, 2026  
IGI Report No LG792621726  
**ROUND BRILLIANT**  
2.04 CARATS  
F  
VS 1  
EXCELLENT  
8.05 - 8.08 X 5.09 MM  
63.1%  
57%  
Medium (Faceted)  
Pointed  
EXCELLENT  
EXCELLENT  
NONE  
IGI LG792621726  
Comments: This Laboratory Grown Diamond was created by Chemical Vapor Deposition (CVD) growth process. Type IIa

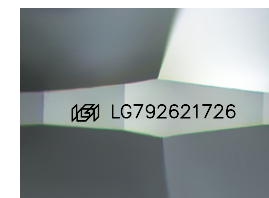
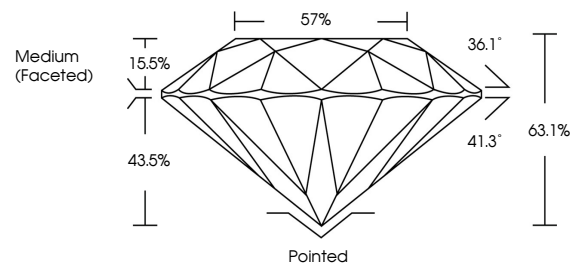
April 27, 2026  
IGI Report Number **LG792621726**  
Description **LABORATORY GROWN DIAMOND**  
Shape and Cutting Style **ROUND BRILLIANT**  
Measurements **8.05 - 8.08 X 5.09 MM**

**GRADING RESULTS**  
Carat Weight **2.04 CARATS**  
Color Grade **F**  
Clarity Grade **VS 1**  
Cut Grade **EXCELLENT**

**ADDITIONAL GRADING INFORMATION**  
Polish **EXCELLENT**  
Symmetry **EXCELLENT**  
Fluorescence **NONE**  
Inscription(s) **IGI LG792621726**

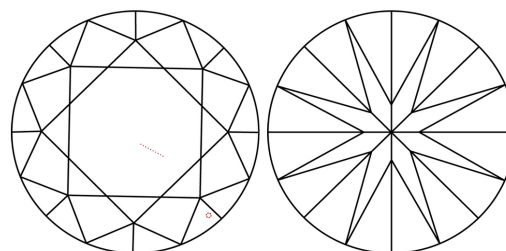
Comments: This Laboratory Grown Diamond was created by Chemical Vapor Deposition (CVD) growth process. Type IIa

**PROPORTIONS**



Sample Image Used

**CLARITY CHARACTERISTICS**



**KEY TO SYMBOLS**

Red symbols indicate internal characteristics.  
Green symbols indicate external characteristics.

**COLOR**

D E F G H I J Faint Very Light Light

**CLARITY**

FL	IF	VS <sup>1-2</sup>	VS <sup>1-2</sup>	SI <sup>1-2</sup>	I <sup>1-3</sup>
Flawless	Internally Flawless	Very Very Slightly Included	Very Slightly Included	Slightly Included	Included

