



ELECTRONIC COPY

LG792621398
Report verification at igi.org



May 6, 2026

IGI Report Number **LG792621398**

Description **LABORATORY GROWN DIAMOND**

Shape and Cutting Style **ROUND BRILLIANT**

Measurements **9.76 - 9.79 X 6.06 MM**

GRADING RESULTS

Carat Weight **3.55 CARATS**

Color Grade **D**

Clarity Grade **FLAWLESS**

Cut Grade **IDEAL**

May 6, 2026

IGI Report Number **LG792621398**

Description **LABORATORY GROWN DIAMOND**

Shape and Cutting Style **ROUND BRILLIANT**

Measurements **9.76 - 9.79 X 6.06 MM**

GRADING RESULTS

Carat Weight **3.55 CARATS**

Color Grade **D**

Clarity Grade **FLAWLESS**

Cut Grade **IDEAL**

ADDITIONAL GRADING INFORMATION

Polish **EXCELLENT**

Symmetry **EXCELLENT**

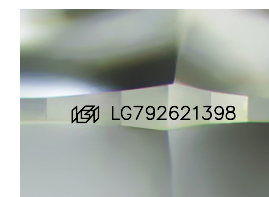
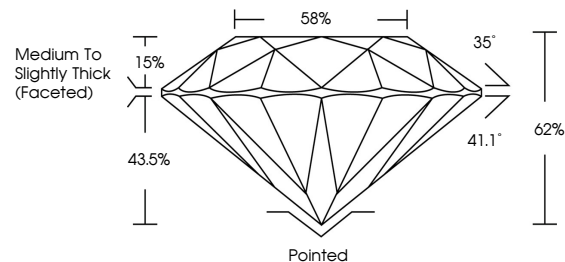
Fluorescence **NONE**

Inscription(s) **IGI LG792621398**

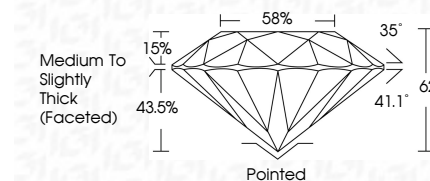
Comments: As Grown - No indication of post-growth treatment.

This Laboratory Grown Diamond was created by High Pressure High Temperature (HPHT) growth process. Type II

PROPORTIONS



Sample Image Used



COLOR

D E F G H I J Faint Very Light Light

CLARITY

FL	IF	VS ¹⁻²	VS ¹⁻²	SI ¹⁻²	I ¹⁻³
Flawless	Internally Flawless	Very Very Slightly Included	Very Slightly Included	Slightly Included	Included

ADDITIONAL GRADING INFORMATION

Polish **EXCELLENT**

Symmetry **EXCELLENT**

Fluorescence **NONE**

Inscription(s) **IGI LG792621398**

Comments: As Grown - No indication of post-growth treatment.

This Laboratory Grown Diamond was created by High Pressure High Temperature (HPHT) growth process. Type II



IGI



May 6, 2026
IGI Report No LG792621398
ROUND BRILLIANT

9.76 - 9.79 X 6.06 MM

3.55 CARATS

D

FLAWLESS

IDEAL

62%

88%

Medium To Slightly Thick (Faceted)

Pointed

EXCELLENT

EXCELLENT

NONE

IGI LG792621398

Comments: As Grown - No indication of post-growth treatment. This Laboratory Grown Diamond was created by High Pressure High Temperature (HPHT) growth process. Type II