



**ELECTRONIC COPY**

LG792620761  
Report verification at igi.org



May 4, 2026  
IGI Report Number **LG792620761**  
Description **LABORATORY GROWN DIAMOND**  
Shape and Cutting Style **SQUARE EMERALD CUT**  
Measurements **5.48 X 5.44 X 3.71 MM**  
**GRADING RESULTS**  
Carat Weight **1.04 CARAT**  
Color Grade **D**  
Clarity Grade **FLAWLESS**

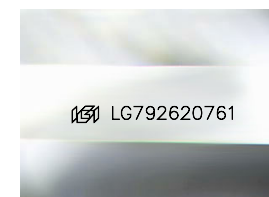
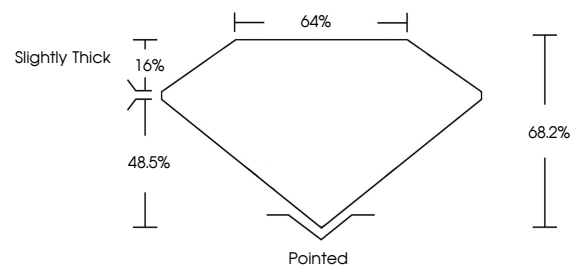
May 4, 2026  
IGI Report Number **LG792620761**  
Description **LABORATORY GROWN DIAMOND**  
Shape and Cutting Style **SQUARE EMERALD CUT**  
Measurements **5.48 X 5.44 X 3.71 MM**  
**GRADING RESULTS**  
Carat Weight **1.04 CARAT**  
Color Grade **D**  
Clarity Grade **FLAWLESS**

**ADDITIONAL GRADING INFORMATION**

Polish **EXCELLENT**  
Symmetry **EXCELLENT**  
Fluorescence **NONE**  
Inscription(s) **IGI LG792620761**

Comments: As Grown - No indication of post-growth treatment.  
This Laboratory Grown Diamond was created by High Pressure High Temperature (HPHT) growth process. Type II

**PROPORTIONS**



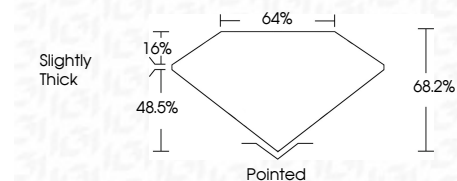
Sample Image Used

**COLOR**

D E F G H I J Faint Very Light Light

**CLARITY**

FL	IF	VS <sup>1-2</sup>	VS <sup>1-2</sup>	SI <sup>1-2</sup>	I <sup>1-3</sup>
Flawless	Internally Flawless	Very Very Slightly Included	Very Slightly Included	Slightly Included	Included



**ADDITIONAL GRADING INFORMATION**

Polish **EXCELLENT**  
Symmetry **EXCELLENT**  
Fluorescence **NONE**  
Inscription(s) **IGI LG792620761**  
Comments: As Grown - No indication of post-growth treatment.  
This Laboratory Grown Diamond was created by High Pressure High Temperature (HPHT) growth process. Type II



**IGI**

May 4, 2026  
IGI Report No **LG792620761**  
**SQUARE EMERALD CUT**  
Carat Weight **1.04 CARAT**  
Color Grade **D**  
Clarity Grade **FLAWLESS**  
Depth **68.2%**  
Table **64%**  
Girdle **Slightly Thick**  
Culet **Pointed**  
Polish **EXCELLENT**  
Symmetry **EXCELLENT**  
Fluorescence **NONE**  
Inscription(s) **IGI LG792620761**

Comments: As Grown - No indication of post-growth treatment.  
This Laboratory Grown Diamond was created by High Pressure High Temperature (HPHT) growth process. Type II