



ELECTRONIC COPY

LG792620498
Report verification at igi.org



May 12, 2026
IGI Report Number **LG792620498**
Description **LABORATORY GROWN DIAMOND**
Shape and Cutting Style **OVAL BRILLIANT**
Measurements **10.36 X 5.54 X 3.83 MM**
GRADING RESULTS
Carat Weight **1.59 CARAT**
Color Grade **FANCY DEEP BROWN**
Clarity Grade **VVS 2**

May 12, 2026
IGI Report Number **LG792620498**
Description **LABORATORY GROWN DIAMOND**
Shape and Cutting Style **OVAL BRILLIANT**
Measurements **10.36 X 5.54 X 3.83 MM**

GRADING RESULTS

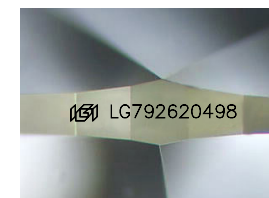
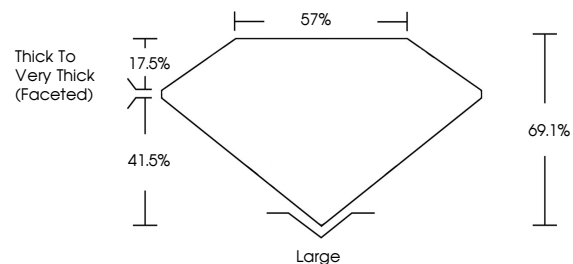
Carat Weight **1.59 CARAT**
Color Grade **FANCY DEEP BROWN**
Clarity Grade **VVS 2**

ADDITIONAL GRADING INFORMATION

Polish **EXCELLENT**
Symmetry **EXCELLENT**
Fluorescence **NONE**
Inscription(s) **IGI LG792620498**

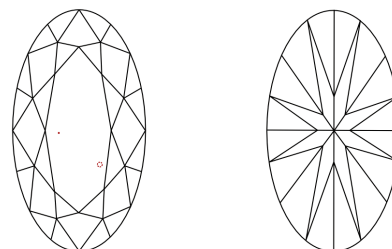
Comments: This Laboratory Grown Diamond was created by Chemical Vapor Deposition (CVD) growth process.

PROPORTIONS



Sample Image Used

CLARITY CHARACTERISTICS



KEY TO SYMBOLS

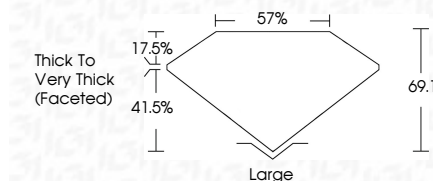
Red symbols indicate internal characteristics.
Green symbols indicate external characteristics.

COLOR

D E F G H I J Faint Very Light Light

CLARITY

FL	IF	VVS ¹⁻²	VS ¹⁻²	SI ¹⁻²	I ¹⁻³
Flawless	Internally Flawless	Very Very Slightly Included	Very Slightly Included	Slightly Included	Included



ADDITIONAL GRADING INFORMATION

Polish **EXCELLENT**
Symmetry **EXCELLENT**
Fluorescence **NONE**
Inscription(s) **IGI LG792620498**
Comments: This Laboratory Grown Diamond was created by Chemical Vapor Deposition (CVD) growth process.



May 12, 2026
IGI Report No **LG792620498**
OVAL BRILLIANT
Carat Weight **1.59 CARAT**
Color Grade **FANCY DEEP BROWN**
Clarity Grade **VVS 2**
Depth **69.1%**
Table **57%**
Girdle **Thick to Very Thick (Faceted)**
Culet **Large**
Polish **EXCELLENT**
Symmetry **EXCELLENT**
Fluorescence **NONE**
Inscription(s) **IGI LG792620498**
Comments: This Laboratory Grown Diamond was created by Chemical Vapor Deposition (CVD) growth process.