



ELECTRONIC COPY

LG792620454
Report verification at igi.org



May 12, 2026

IGI Report Number **LG792620454**

Description **LABORATORY GROWN DIAMOND**

Shape and Cutting Style **EMERALD CUT**

Measurements **8.09 X 5.50 X 3.58 MM**

GRADING RESULTS

Carat Weight **1.59 CARAT**

Color Grade **FANCY INTENSE PINK**

Clarity Grade **VVS 2**

May 12, 2026
IGI Report Number **LG792620454**
Description **LABORATORY GROWN DIAMOND**
Shape and Cutting Style **EMERALD CUT**
Measurements **8.09 X 5.50 X 3.58 MM**

GRADING RESULTS

Carat Weight **1.59 CARAT**

Color Grade **FANCY INTENSE PINK**

Clarity Grade **VVS 2**

ADDITIONAL GRADING INFORMATION

Polish **EXCELLENT**

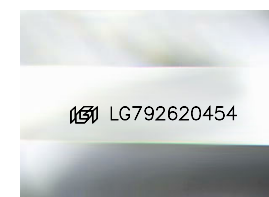
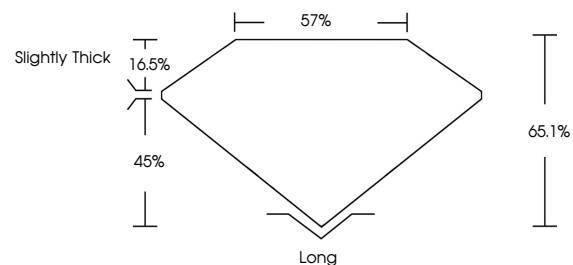
Symmetry **EXCELLENT**

Fluorescence **STRONG**

Inscription(s) **IGI LG792620454**

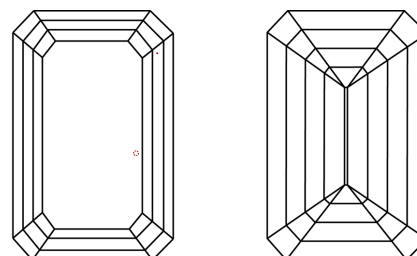
Comments: This Laboratory Grown Diamond was created by Chemical Vapor Deposition (CVD) growth process.
Indications of post-growth treatment.

PROPORTIONS



Sample Image Used

CLARITY CHARACTERISTICS



KEY TO SYMBOLS

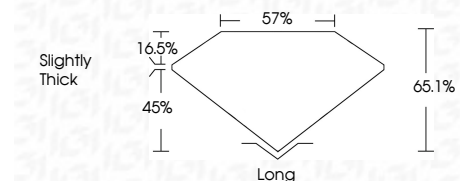
Red symbols indicate internal characteristics.
Green symbols indicate external characteristics.

COLOR

D E F G H I J Faint Very Light Light

CLARITY

FL	IF	VVS ¹⁻²	VS ¹⁻²	SI ¹⁻²	I ¹⁻³
Flawless	Internally Flawless	Very Very Slightly Included	Very Slightly Included	Slightly Included	Included



ADDITIONAL GRADING INFORMATION

Polish **EXCELLENT**

Symmetry **EXCELLENT**

Fluorescence **STRONG**

Inscription(s) **IGI LG792620454**

Comments: This Laboratory Grown Diamond was created by Chemical Vapor Deposition (CVD) growth process.
Indications of post-growth treatment.



May 12, 2026
IGI Report No **LG792620454**
EMERALD CUT
Carat Weight **1.59 CARAT**
Color Grade **FANCY INTENSE PINK**
Clarity Grade **VVS 2**
Depth **65.1%**
Table **57%**
Girdle **Slightly Thick**
Culet **Long**
Polish **EXCELLENT**
Symmetry **EXCELLENT**
Fluorescence **STRONG**
Inscription(s) **IGI LG792620454**
Comments: This Laboratory Grown Diamond was created by Chemical Vapor Deposition (CVD) growth process.
Indications of post-growth treatment.