



ELECTRONIC COPY

LG792620243
Report verification at igi.org



April 27, 2026

IGI Report Number **LG792620243**

Description **LABORATORY GROWN DIAMOND**

Shape and Cutting Style **OLD EUROPEAN CUT**

Measurements **6.88 - 6.91 X 3.95 MM**

GRADING RESULTS

Carat Weight **1.25 CARAT**

Color Grade **LIGHT BROWN**

Clarity Grade **VS 1**

April 27, 2026

IGI Report Number **LG792620243**

Description **LABORATORY GROWN DIAMOND**

Shape and Cutting Style **OLD EUROPEAN CUT**

Measurements **6.88 - 6.91 X 3.95 MM**

GRADING RESULTS

Carat Weight **1.25 CARAT**

Color Grade **LIGHT BROWN**

Clarity Grade **VS 1**

ADDITIONAL GRADING INFORMATION

Polish **VERY GOOD**

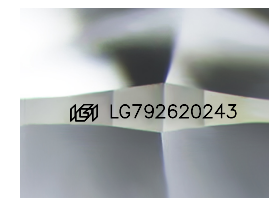
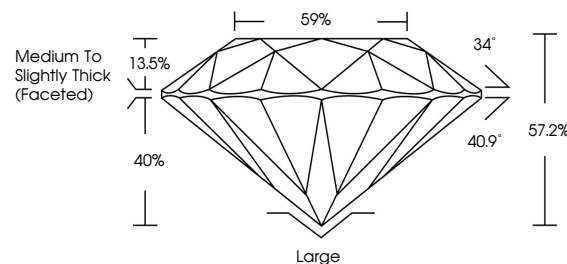
Symmetry **EXCELLENT**

Fluorescence **VERY SLIGHT**

Inscription(s) **IGI LG792620243**

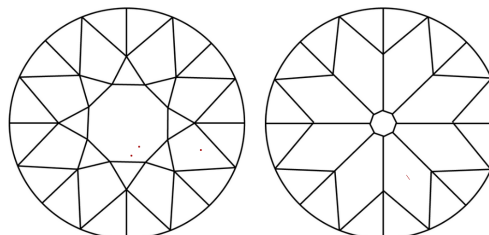
Comments: This Laboratory Grown Diamond was created by Chemical Vapor Deposition (CVD) growth process. Indications of post-growth treatment.

PROPORTIONS



Sample Image Used

CLARITY CHARACTERISTICS



KEY TO SYMBOLS

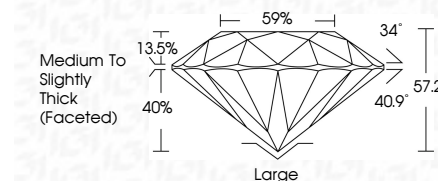
Red symbols indicate internal characteristics.
Green symbols indicate external characteristics.

COLOR

D E F G H I J Faint Very Light Light

CLARITY

FL	IF	VS ¹⁻²	VS ¹⁻²	SI ¹⁻²	I ¹⁻³
Flawless	Internally Flawless	Very Very Slightly Included	Very Slightly Included	Slightly Included	Included



ADDITIONAL GRADING INFORMATION

Polish **VERY GOOD**

Symmetry **EXCELLENT**

Fluorescence **VERY SLIGHT**

Inscription(s) **IGI LG792620243**

Comments: This Laboratory Grown Diamond was created by Chemical Vapor Deposition (CVD) growth process. Indications of post-growth treatment.



April 27, 2026
IGI Report No. LG792620243
OLD EUROPEAN CUT

1.25 CARAT
Carat Weight
Color Grade
Clarity Grade
Table
Girdle
Culet
Polish
Symmetry
Fluorescence
Inscription(s)

LIGHT BROWN
VS 1
6.88 - 6.91 X 3.95 MM
57.2%
59%
Medium to Slightly Thick (Faceted)
Large
VERY GOOD
EXCELLENT
VERY SLIGHT
IGI LG792620243

Comments: This Laboratory Grown Diamond was created by Chemical Vapor Deposition (CVD) growth process. Indications of post-growth treatment.