



ELECTRONIC COPY

LG792620227
Report verification at igi.org



April 27, 2026

IGI Report Number **LG792620227**

Description **LABORATORY GROWN DIAMOND**

Shape and Cutting Style **ROUND BRILLIANT**

Measurements **6.59 - 6.61 X 3.96 MM**

GRADING RESULTS

Carat Weight **1.07 CARAT**

Color Grade **FANCY LIGHT BROWN**

Clarity Grade **VS 2**

Cut Grade **IDEAL**

April 27, 2026

IGI Report Number **LG792620227**

Description **LABORATORY GROWN DIAMOND**

Shape and Cutting Style **ROUND BRILLIANT**

Measurements **6.59 - 6.61 X 3.96 MM**

GRADING RESULTS

Carat Weight **1.07 CARAT**

Color Grade **FANCY LIGHT BROWN**

Clarity Grade **VS 2**

Cut Grade **IDEAL**

ADDITIONAL GRADING INFORMATION

Polish **VERY GOOD**

Symmetry **EXCELLENT**

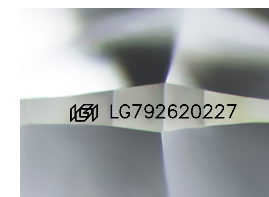
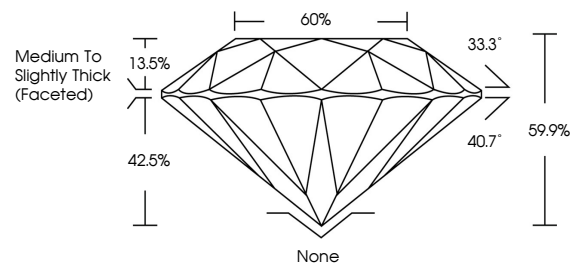
Fluorescence **VERY SLIGHT**

Inscription(s) **IGI LG792620227**

Comments: This Laboratory Grown Diamond was created by Chemical Vapor Deposition (CVD) growth process.

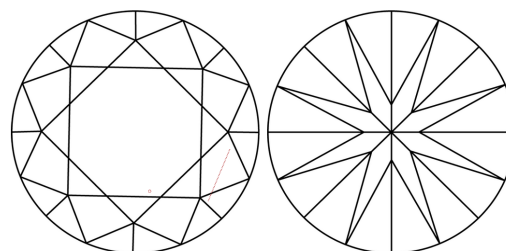
Indications of post-growth treatment.

PROPORTIONS



Sample Image Used

CLARITY CHARACTERISTICS



KEY TO SYMBOLS

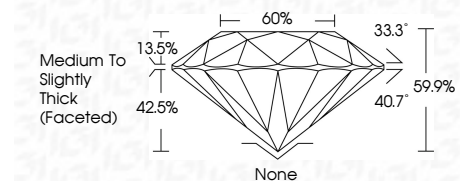
Red symbols indicate internal characteristics.
Green symbols indicate external characteristics.

COLOR

D E F G H I J Faint Very Light Light

CLARITY

FL	IF	VS ¹⁻²	VS ¹⁻²	SI ¹⁻²	I ¹⁻³
Flawless	Internally Flawless	Very Very Slightly Included	Very Slightly Included	Slightly Included	Included



ADDITIONAL GRADING INFORMATION

Polish **VERY GOOD**

Symmetry **EXCELLENT**

Fluorescence **VERY SLIGHT**

Inscription(s) **IGI LG792620227**

Comments: This Laboratory Grown Diamond was created by Chemical Vapor Deposition (CVD) growth process. Indications of post-growth treatment.



April 27, 2026
IGI Report No. LG792620227
ROUND BRILLIANT
6.59 - 6.61 X 3.96 MM
1.07 CARAT
FANCY LIGHT BROWN
VS 2
IDEAL
60%
Medium To Slightly Thick (Faceted)
None
VERY GOOD
EXCELLENT
VERY SLIGHT
IGI LG792620227

Comments: This Laboratory Grown Diamond was created by Chemical Vapor Deposition (CVD) growth process. Indications of post-growth treatment.