



**ELECTRONIC COPY**

LG792620225  
Report verification at igi.org



April 27, 2026

IGI Report Number **LG792620225**

Description **LABORATORY GROWN DIAMOND**

Shape and Cutting Style **ROUND BRILLIANT**

Measurements **7.65 - 7.70 X 4.75 MM**

**GRADING RESULTS**

Carat Weight **1.73 CARAT**

Color Grade **FANCY LIGHT BROWN**

Clarity Grade **VVS 2**

Cut Grade **IDEAL**

April 27, 2026

IGI Report Number **LG792620225**

Description **LABORATORY GROWN DIAMOND**

Shape and Cutting Style **ROUND BRILLIANT**

Measurements **7.65 - 7.70 X 4.75 MM**

**GRADING RESULTS**

Carat Weight **1.73 CARAT**

Color Grade **FANCY LIGHT BROWN**

Clarity Grade **VVS 2**

Cut Grade **IDEAL**

**ADDITIONAL GRADING INFORMATION**

Polish **EXCELLENT**

Symmetry **EXCELLENT**

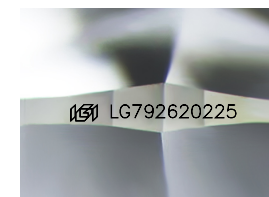
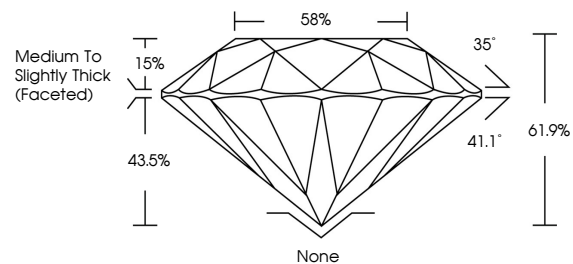
Fluorescence **SLIGHT**

Inscription(s) **IGI LG792620225**

Comments: This Laboratory Grown Diamond was created by Chemical Vapor Deposition (CVD) growth process.

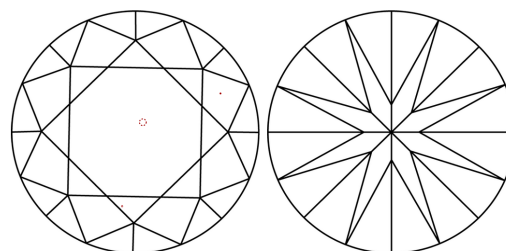
Indications of post-growth treatment.

**PROPORTIONS**



Sample Image Used

**CLARITY CHARACTERISTICS**



**KEY TO SYMBOLS**

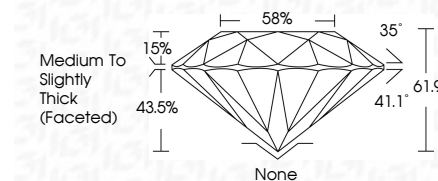
Red symbols indicate internal characteristics.  
Green symbols indicate external characteristics.

**COLOR**

D E F G H I J Faint Very Light Light

**CLARITY**

FL	IF	VVS <sup>1-2</sup>	VS <sup>1-2</sup>	SI <sup>1-2</sup>	I <sup>1-3</sup>
Flawless	Internally Flawless	Very Very Slightly Included	Very Slightly Included	Slightly Included	Included



**ADDITIONAL GRADING INFORMATION**

Polish **EXCELLENT**

Symmetry **EXCELLENT**

Fluorescence **SLIGHT**

Inscription(s) **IGI LG792620225**

Comments: This Laboratory Grown Diamond was created by Chemical Vapor Deposition (CVD) growth process. Indications of post-growth treatment.



April 27, 2026  
IGI Report No LG792620225  
ROUND BRILLIANT

7.65 - 7.70 X 4.75 MM  
1.73 CARAT  
FANCY LIGHT BROWN  
VVS 2  
IDEAL  
61.9%  
58%  
Medium To Slightly Thick (Faceted)

None  
EXCELLENT  
EXCELLENT  
SLIGHT  
SLIGHT  
IGI LG792620225

Cutler  
Polish  
Symmetry  
Fluorescence  
Inscription(s)

Comments: This Laboratory Grown Diamond was created by Chemical Vapor Deposition (CVD) growth process. Indications of post-growth treatment.