



ELECTRONIC COPY

LG792620224
Report verification at igi.org



April 27, 2026
IGI Report Number **LG792620224**
Description **LABORATORY GROWN DIAMOND**
Shape and Cutting Style **ROUND BRILLIANT**
Measurements **6.74 - 6.77 X 3.84 MM**
GRADING RESULTS
Carat Weight **1.10 CARAT**
Color Grade **FANCY LIGHT BROWN**
Clarity Grade **VVS 2**
Cut Grade **VERY GOOD**

April 27, 2026
IGI Report Number **LG792620224**
Description **LABORATORY GROWN DIAMOND**
Shape and Cutting Style **ROUND BRILLIANT**
Measurements **6.74 - 6.77 X 3.84 MM**

GRADING RESULTS

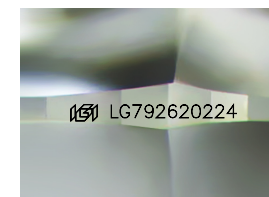
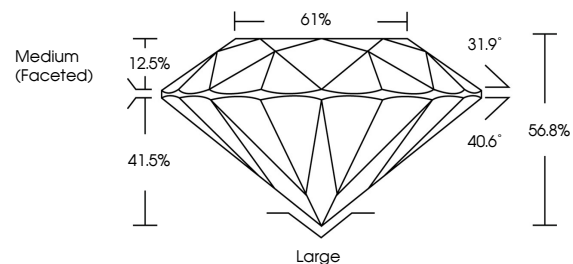
Carat Weight **1.10 CARAT**
Color Grade **FANCY LIGHT BROWN**
Clarity Grade **VVS 2**
Cut Grade **VERY GOOD**

ADDITIONAL GRADING INFORMATION

Polish **VERY GOOD**
Symmetry **EXCELLENT**
Fluorescence **SLIGHT**
Inscription(s) **IGI LG792620224**

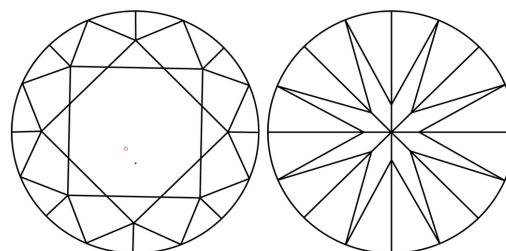
Comments: This Laboratory Grown Diamond was created by Chemical Vapor Deposition (CVD) growth process.
Indications of post-growth treatment.

PROPORTIONS



Sample Image Used

CLARITY CHARACTERISTICS



KEY TO SYMBOLS

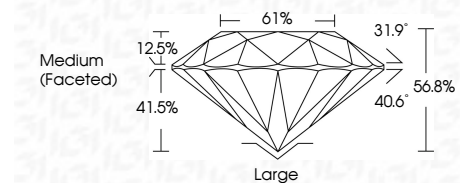
Red symbols indicate internal characteristics.
Green symbols indicate external characteristics.

COLOR

D E F G H I J Faint Very Light Light

CLARITY

FL	IF	VVS ¹⁻²	VS ¹⁻²	SI ¹⁻²	I ¹⁻³
Flawless	Internally Flawless	Very Very Slightly Included	Very Slightly Included	Slightly Included	Included



ADDITIONAL GRADING INFORMATION

Polish **VERY GOOD**
Symmetry **EXCELLENT**
Fluorescence **SLIGHT**
Inscription(s) **IGI LG792620224**
Comments: This Laboratory Grown Diamond was created by Chemical Vapor Deposition (CVD) growth process.
Indications of post-growth treatment.



IGI



April 27, 2026
IGI Report No **LG792620224**
ROUND BRILLIANT
6.74 - 6.77 X 3.84 MM
Carat Weight **1.10 CARAT**
Color Grade **FANCY LIGHT BROWN**
Clarity Grade **VVS 2**
Depth **56.8%**
Table **61%**
Girdle **Medium (Faceted)**
Culet **Large**
Polish **VERY GOOD**
Symmetry **EXCELLENT**
Fluorescence **SLIGHT**
Inscription(s) **IGI LG792620224**
Comments: This Laboratory Grown Diamond was created by Chemical Vapor Deposition (CVD) growth process.
Indications of post-growth treatment.