



ELECTRONIC COPY

LG792620202
Report verification at igi.org



April 28, 2026

IGI Report Number **LG792620202**

Description **LABORATORY GROWN DIAMOND**

Shape and Cutting Style **PRINCESS CUT**

Measurements **5.72 X 5.65 X 3.74 MM**

GRADING RESULTS

Carat Weight **1.03 CARAT**

Color Grade **LIGHT BROWN**

Clarity Grade **VVS 2**

April 28, 2026
IGI Report Number **LG792620202**
Description **LABORATORY GROWN DIAMOND**
Shape and Cutting Style **PRINCESS CUT**
Measurements **5.72 X 5.65 X 3.74 MM**

GRADING RESULTS

Carat Weight **1.03 CARAT**

Color Grade **LIGHT BROWN**

Clarity Grade **VVS 2**

ADDITIONAL GRADING INFORMATION

Polish **VERY GOOD**

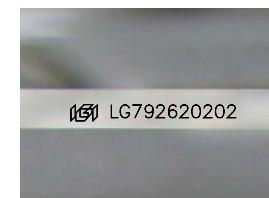
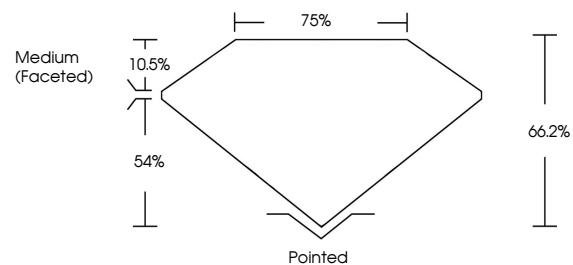
Symmetry **VERY GOOD**

Fluorescence **VERY SLIGHT**

Inscription(s) **IGI LG792620202**

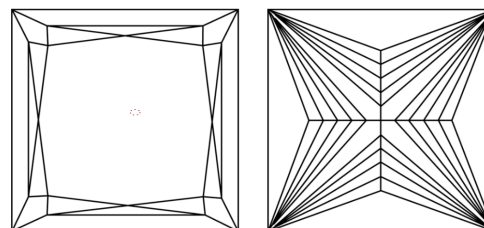
Comments: This Laboratory Grown Diamond was created by Chemical Vapor Deposition (CVD) growth process.
Type IIa

PROPORTIONS



Sample Image Used

CLARITY CHARACTERISTICS



KEY TO SYMBOLS

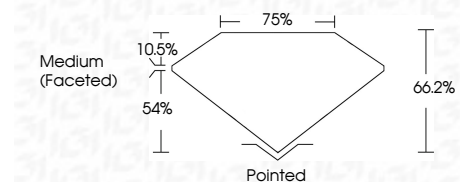
Red symbols indicate internal characteristics.
Green symbols indicate external characteristics.

COLOR

D E F G H I J Faint Very Light Light

CLARITY

FL	IF	VVS ¹⁻²	VS ¹⁻²	SI ¹⁻²	I ¹⁻³
Flawless	Internally Flawless	Very Very Slightly Included	Very Slightly Included	Slightly Included	Included



ADDITIONAL GRADING INFORMATION

Polish **VERY GOOD**

Symmetry **VERY GOOD**

Fluorescence **VERY SLIGHT**

Inscription(s) **IGI LG792620202**

Comments: This Laboratory Grown Diamond was created by Chemical Vapor Deposition (CVD) growth process.
Type IIa



IGI



April 28, 2026
IGI Report No. **LG792620202**
PRINCESS CUT

1.03 CARAT
Carat Weight
LIGHT BROWN
Color Grade

VVS 2
Clarity Grade
66.2%
Table
75%
Girdle
Medium (Faceted)

Pointed
Culet
VERY GOOD
Polish
VERY GOOD
Symmetry
VERY SLIGHT
Fluorescence
Inscription(s)
IGI LG792620202

Comments: This Laboratory Grown Diamond was created by Chemical Vapor Deposition (CVD) growth process.
Type IIa