



ELECTRONIC COPY

LG792620160
Report verification at igi.org



April 27, 2026
IGI Report Number **LG792620160**
Description **LABORATORY GROWN DIAMOND**
Shape and Cutting Style **CUSHION MODIFIED BRILLIANT**
Measurements **8.08 X 6.99 X 4.52 MM**
GRADING RESULTS
Carat Weight **2.35 CARATS**
Color Grade **FANCY VIVID BLUE**
Clarity Grade **VVS 1**

LABORATORY GROWN DIAMOND REPORT

April 27, 2026
IGI Report Number **LG792620160**
Description **LABORATORY GROWN DIAMOND**
Shape and Cutting Style **CUSHION MODIFIED BRILLIANT**
Measurements **8.08 X 6.99 X 4.52 MM**

GRADING RESULTS

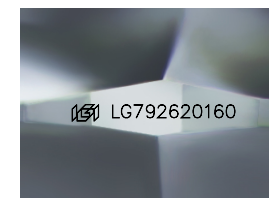
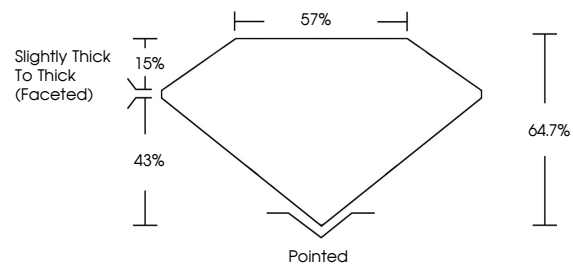
Carat Weight **2.35 CARATS**
Color Grade **FANCY VIVID BLUE**
Clarity Grade **VVS 1**

ADDITIONAL GRADING INFORMATION

Polish **EXCELLENT**
Symmetry **EXCELLENT**
Fluorescence **NONE**
Inscription(s) **IGI LG792620160**

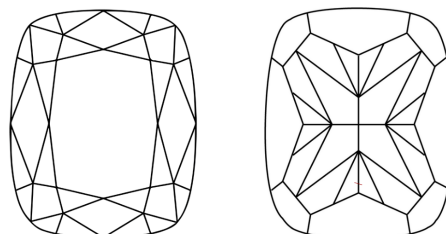
Comments: This Laboratory Grown Diamond was created by High Pressure High Temperature (HPHT) growth process.
Indications of post-growth treatment.

PROPORTIONS



Sample Image Used

CLARITY CHARACTERISTICS



KEY TO SYMBOLS

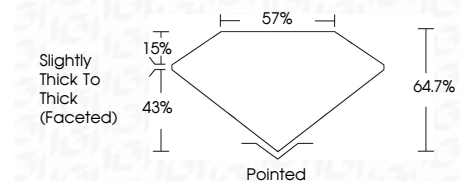
Red symbols indicate internal characteristics.
Green symbols indicate external characteristics.

COLOR

D E F G H I J Faint Very Light Light

CLARITY

FL	IF	VVS ¹⁻²	VS ¹⁻²	SI ¹⁻²	I ¹⁻³
Flawless	Internally Flawless	Very Very Slightly Included	Very Slightly Included	Slightly Included	Included



ADDITIONAL GRADING INFORMATION

Polish **EXCELLENT**
Symmetry **EXCELLENT**
Fluorescence **NONE**
Inscription(s) **IGI LG792620160**
Comments: This Laboratory Grown Diamond was created by High Pressure High Temperature (HPHT) growth process.
Indications of post-growth treatment.



April 27, 2026
IGI Report No **LG792620160**
CUSHION MODIFIED BRILLIANT
8.08 X 6.99 X 4.52 MM
Carat Weight **2.35 CARATS**
Color Grade **FANCY VIVID BLUE**
Clarity Grade **VVS 1**
Depth **64.7%**
Table **57%**
Girdle **Slightly Thick To Thick (Faceted)**
Culet **Pointed**
Polish **EXCELLENT**
Symmetry **EXCELLENT**
Fluorescence **NONE**
Inscription(s) **IGI LG792620160**

Comments: This Laboratory Grown Diamond was created by High Pressure High Temperature (HPHT) growth process.
Indications of post-growth treatment.