



ELECTRONIC COPY

LG792620126
Report verification at igi.org



April 27, 2026
IGI Report Number **LG792620126**
Description **LABORATORY GROWN DIAMOND**
Shape and Cutting Style **CUSHION MODIFIED BRILLIANT**
Measurements **7.56 X 6.23 X 4.10 MM**
GRADING RESULTS
Carat Weight **1.76 CARAT**
Color Grade **FANCY VIVID BLUE**
Clarity Grade **VVS 1**

April 27, 2026
IGI Report Number **LG792620126**
Description **LABORATORY GROWN DIAMOND**
Shape and Cutting Style **CUSHION MODIFIED BRILLIANT**
Measurements **7.56 X 6.23 X 4.10 MM**

GRADING RESULTS

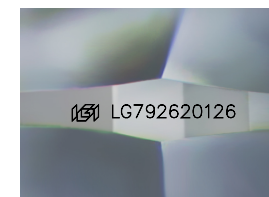
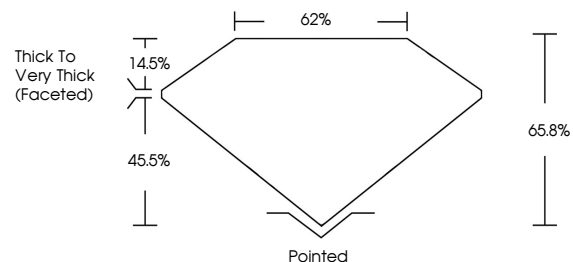
Carat Weight **1.76 CARAT**
Color Grade **FANCY VIVID BLUE**
Clarity Grade **VVS 1**

ADDITIONAL GRADING INFORMATION

Polish **EXCELLENT**
Symmetry **EXCELLENT**
Fluorescence **NONE**
Inscription(s) **IGI LG792620126**

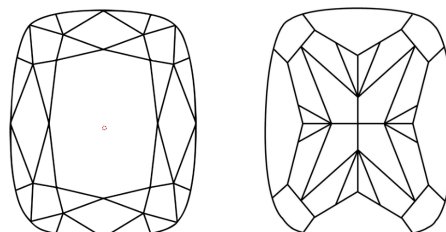
Comments: This Laboratory Grown Diamond was created by High Pressure High Temperature (HPHT) growth process. Indications of post-growth treatment.

PROPORTIONS



Sample Image Used

CLARITY CHARACTERISTICS



KEY TO SYMBOLS

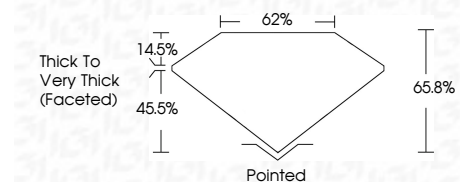
Red symbols indicate internal characteristics.
Green symbols indicate external characteristics.

COLOR

D E F G H I J Faint Very Light Light

CLARITY

FL	IF	VVS ¹⁻²	VS ¹⁻²	SI ¹⁻²	I ¹⁻³
Flawless	Internally Flawless	Very Very Slightly Included	Very Slightly Included	Slightly Included	Included



ADDITIONAL GRADING INFORMATION

Polish **EXCELLENT**
Symmetry **EXCELLENT**
Fluorescence **NONE**
Inscription(s) **IGI LG792620126**
Comments: This Laboratory Grown Diamond was created by High Pressure High Temperature (HPHT) growth process. Indications of post-growth treatment.



April 27, 2026
IGI Report No LG792620126
CUSHION MODIFIED BRILLIANT
7.56 X 6.23 X 4.10 MM
1.76 CARAT
FANCY VIVID BLUE
VVS 1
65.8%
62%
Thick to Very Thick (Faceted)
Pointed
EXCELLENT
EXCELLENT
NONE
IGI LG792620126

Comments: This Laboratory Grown Diamond was created by High Pressure High Temperature (HPHT) growth process. Indications of post-growth treatment.