



ELECTRONIC COPY

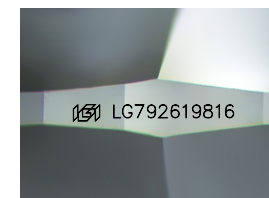
LG792619816
Report verification at igi.org



April 22, 2026
IGI Report Number LG792619816
Description LABORATORY GROWN DIAMOND
Shape and Cutting Style ROUND BRILLIANT
Measurements 7.82 - 7.89 X 4.82 MM

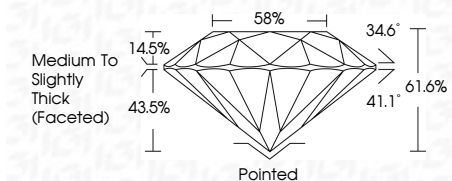
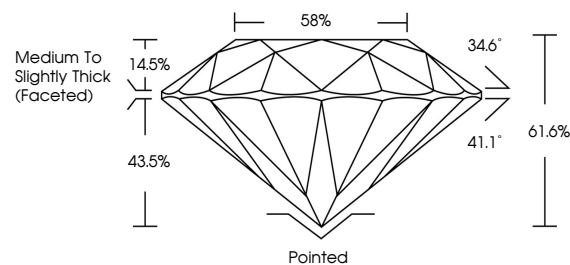
GRADING RESULTS

Carat Weight 1.81 CARAT
Color Grade F
Clarity Grade VS 2
Cut Grade IDEAL

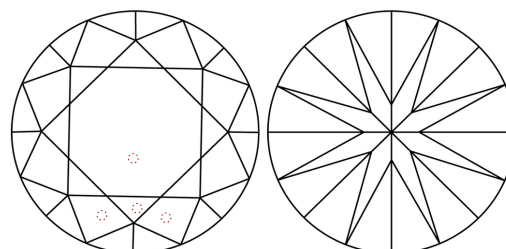


Sample Image Used

PROPORTIONS



CLARITY CHARACTERISTICS



KEY TO SYMBOLS

Red symbols indicate internal characteristics.
Green symbols indicate external characteristics.

COLOR

D E F G H I J Faint Very Light Light

CLARITY

FL IF VS 1-2 VS 1-2 SI 1-2 I 1-3
Flawless Internally Flawless Very Very Slightly Included Very Slightly Included Slightly Included Included

ADDITIONAL GRADING INFORMATION

Polish EXCELLENT
Symmetry EXCELLENT
Fluorescence NONE
Inscription(s) IGI LG792619816
Comments: This Laboratory Grown Diamond was created by Chemical Vapor Deposition (CVD) growth process. Type IIa



IGI



April 22, 2026
IGI Report No LG792619816
ROUND BRILLIANT
1.81 CARAT F
7.82 - 7.89 X 4.82 MM
Carat Weight
Color Grade VS 2
Clarity Grade IDEAL
Cut Grade IDEAL
Depth 61.6%
Table 58%
Medium To Slightly Thick (Faceted)
Girdle
Culet Pointed
Polish EXCELLENT
Symmetry EXCELLENT
Fluorescence NONE
Inscription(s) IGI LG792619816
Comments: This Laboratory Grown Diamond was created by Chemical Vapor Deposition (CVD) growth process. Type IIa