



ELECTRONIC COPY

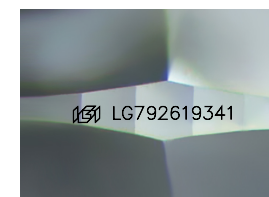
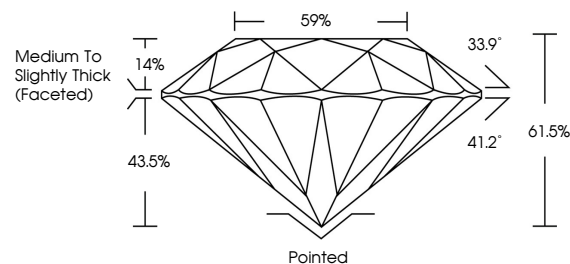
LG792619341
Report verification at igi.org



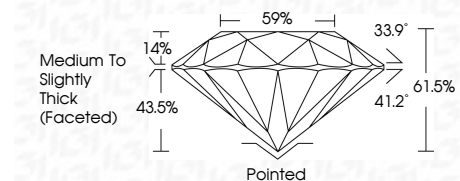
April 22, 2026
IGI Report Number LG792619341
Description LABORATORY GROWN DIAMOND
Shape and Cutting Style ROUND BRILLIANT
Measurements 10.23 - 10.25 X 6.29 MM
GRADING RESULTS
Carat Weight 4.06 CARATS
Color Grade E
Clarity Grade VS 1
Cut Grade IDEAL

April 22, 2026
IGI Report Number LG792619341
Description LABORATORY GROWN DIAMOND
Shape and Cutting Style ROUND BRILLIANT
Measurements 10.23 - 10.25 X 6.29 MM
GRADING RESULTS
Carat Weight 4.06 CARATS
Color Grade E
Clarity Grade VS 1
Cut Grade IDEAL

PROPORTIONS



Sample Image Used



ADDITIONAL GRADING INFORMATION

Polish EXCELLENT
Symmetry EXCELLENT
Fluorescence NONE
Inscription(s) IGI LG792619341

Comments: This Laboratory Grown Diamond was created by Chemical Vapor Deposition (CVD) growth process. Type IIa

ADDITIONAL GRADING INFORMATION

Polish EXCELLENT
Symmetry EXCELLENT
Fluorescence NONE
Inscription(s) IGI LG792619341
Comments: This Laboratory Grown Diamond was created by Chemical Vapor Deposition (CVD) growth process. Type IIa

COLOR

D E F G H I J Faint Very Light Light

CLARITY

FL IF VS 1-2 VS 2-3 SI 1-2 I 1-3
Flawless Internally Flawless Very Very Slightly Included Very Slightly Included Slightly Included Included



IGI



Summary of report details including date, report number, description, measurements, grading results, and additional information.