



ELECTRONIC COPY

LG792615989
Report verification at igi.org



April 18, 2026
IGI Report Number **LG792615989**
Description **LABORATORY GROWN DIAMOND**
Shape and Cutting Style **ROUND BRILLIANT**
Measurements **6.68 - 6.75 X 4.09 MM**
GRADING RESULTS
Carat Weight **1.15 CARAT**
Color Grade **FANCY VIVID BLUE**
Clarity Grade **VS 2**
Cut Grade **VERY GOOD**

April 18, 2026
IGI Report Number **LG792615989**
Description **LABORATORY GROWN DIAMOND**
Shape and Cutting Style **ROUND BRILLIANT**
Measurements **6.68 - 6.75 X 4.09 MM**

GRADING RESULTS

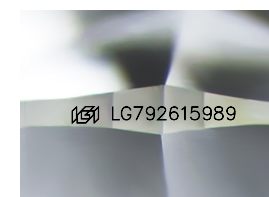
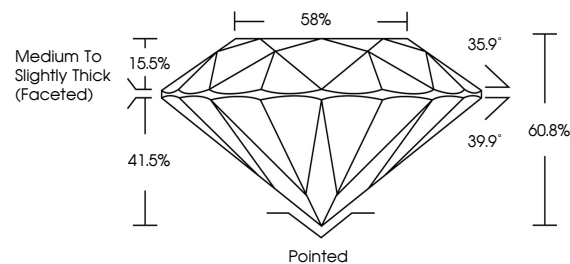
Carat Weight **1.15 CARAT**
Color Grade **FANCY VIVID BLUE**
Clarity Grade **VS 2**
Cut Grade **VERY GOOD**

ADDITIONAL GRADING INFORMATION

Polish **VERY GOOD**
Symmetry **VERY GOOD**
Fluorescence **NONE**
Inscription(s) **IGI LG792615989**

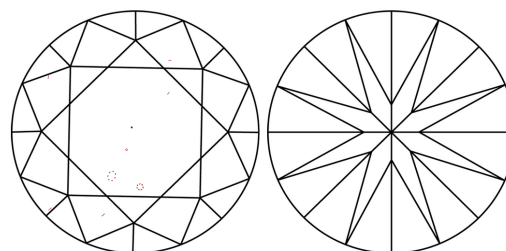
Comments: This Laboratory Grown Diamond was created by Chemical Vapor Deposition (CVD) growth process.
Indications of post-growth treatment.

PROPORTIONS



Sample Image Used

CLARITY CHARACTERISTICS



KEY TO SYMBOLS

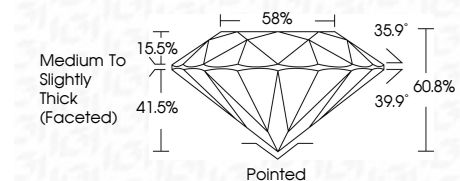
Red symbols indicate internal characteristics.
Green symbols indicate external characteristics.

COLOR

D E F G H I J Faint Very Light Light

CLARITY

FL	IF	VS ¹⁻²	VS ¹⁻²	SI ¹⁻²	I ¹⁻³
Flawless	Internally Flawless	Very Very Slightly Included	Very Slightly Included	Slightly Included	Included



ADDITIONAL GRADING INFORMATION

Polish **VERY GOOD**
Symmetry **VERY GOOD**
Fluorescence **NONE**
Inscription(s) **IGI LG792615989**
Comments: This Laboratory Grown Diamond was created by Chemical Vapor Deposition (CVD) growth process.
Indications of post-growth treatment.



April 18, 2026
IGI Report No LG792615989
ROUND BRILLIANT
6.68 - 6.75 X 4.09 MM
1.15 CARAT
FANCY VIVID BLUE
Color Grade
VS 2
VERY GOOD
Cut Grade
60.8%
58%
Medium To Slightly Thick (Faceted)
Pointed
VERY GOOD
VERY GOOD
VERY GOOD
NONE
NONE
IGI LG792615989
Comments: This Laboratory Grown Diamond was created by Chemical Vapor Deposition (CVD) growth process.
Indications of post-growth treatment.