



ELECTRONIC COPY

LG792615495 Report verification at igi.org



May 4, 2026 IGI Report Number LG792615495 Description LABORATORY GROWN DIAMOND Shape and Cutting Style SQUARE CUSHION MODIFIED BRILLIANT Measurements 9.58 X 9.14 X 6.21 MM GRADING RESULTS Carat Weight 5.02 CARATS Color Grade FANCY VIVID YELLOW Clarity Grade VS 2

May 4, 2026 IGI Report Number LG792615495 Description LABORATORY GROWN DIAMOND Shape and Cutting Style SQUARE CUSHION MODIFIED BRILLIANT Measurements 9.58 X 9.14 X 6.21 MM

GRADING RESULTS

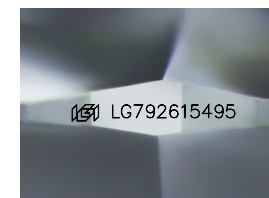
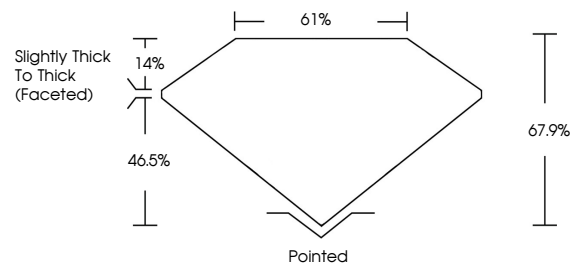
Carat Weight 5.02 CARATS Color Grade FANCY VIVID YELLOW Clarity Grade VS 2

ADDITIONAL GRADING INFORMATION

Polish EXCELLENT Symmetry EXCELLENT Fluorescence NONE Inscription(s) IGI LG792615495

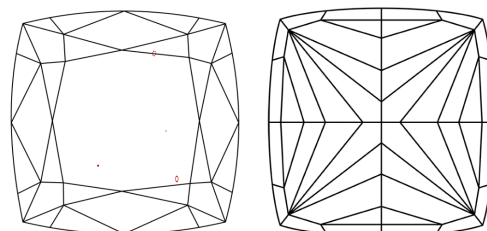
Comments: This Laboratory Grown Diamond was created by Chemical Vapor Deposition (CVD) growth process.

PROPORTIONS



Sample Image Used

CLARITY CHARACTERISTICS



KEY TO SYMBOLS

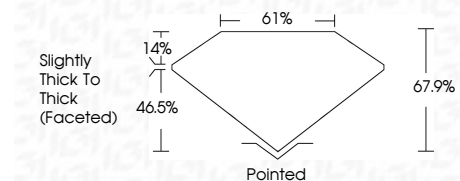
Red symbols indicate internal characteristics. Green symbols indicate external characteristics.

COLOR

D E F G H I J Faint Very Light Light

CLARITY

FL IF VS 1-2 VS 1-2 SI 1-2 I 1-3 Flawless Internally Flawless Very Very Slightly Included Very Slightly Included Slightly Included Included



ADDITIONAL GRADING INFORMATION

Polish EXCELLENT Symmetry EXCELLENT Fluorescence NONE Inscription(s) IGI LG792615495 Comments: This Laboratory Grown Diamond was created by Chemical Vapor Deposition (CVD) growth process.



May 4, 2026 IGI Report No. LG792615495 SQUARE CUSHION MODIFIED BRILLIANT 5.02 CARATS FANCY VIVID YELLOW VS 2 9.58 X 9.14 X 6.21 MM 61% 14% 46.5% Slightly Thick To Thick (Faceted) Pointed EXCELLENT EXCELLENT NONE NONE IGI LG792615495 Comments: This Laboratory Grown Diamond was created by Chemical Vapor Deposition (CVD) growth process.