



ELECTRONIC COPY

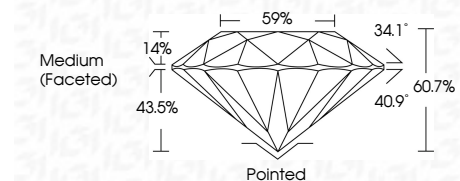
LG792615364 Report verification at igi.org



April 14, 2026 IGI Report Number LG792615364 Description LABORATORY GROWN DIAMOND Shape and Cutting Style ROUND BRILLIANT Measurements 9.35 - 9.38 X 5.68 MM

GRADING RESULTS

Carat Weight 3.04 CARATS Color Grade D Clarity Grade VVS 2 Cut Grade IDEAL



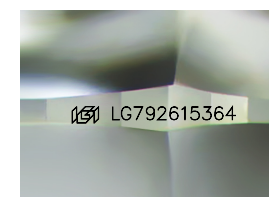
ADDITIONAL GRADING INFORMATION

Polish EXCELLENT Symmetry EXCELLENT Fluorescence NONE Inscription(s) LG792615364 Comments: HEARTS & ARROWS This Laboratory Grown Diamond was created by Chemical Vapor Deposition (CVD) growth process. Type IIa



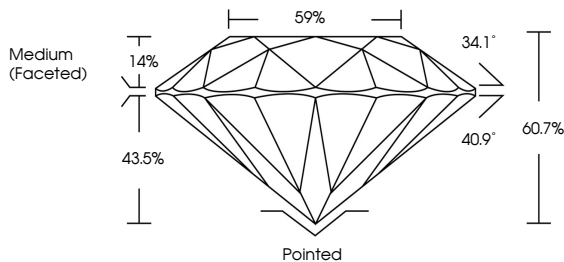
April 14, 2026 IGI Report No LG792615364 ROUND BRILLIANT 9.35 - 9.38 X 5.68 MM 3.04 CARATS D VVS 2 IDEAL 60.7% 59% Medium (Faceted) Pointed EXCELLENT EXCELLENT NONE LG792615364

Comments: HEARTS & ARROWS This Laboratory Grown Diamond was created by Chemical Vapor Deposition (CVD) growth process. Type IIa

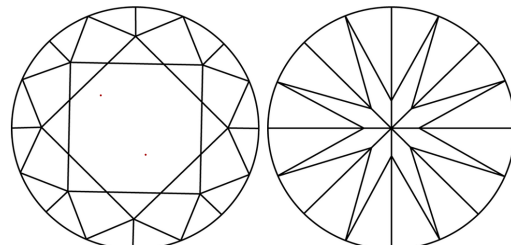


Sample Image Used

PROPORTIONS



CLARITY CHARACTERISTICS



KEY TO SYMBOLS

Red symbols indicate internal characteristics. Green symbols indicate external characteristics.



COLOR

Color scale table with categories D, E, F, G, H, I, J, Faint, Very Light, Light.

CLARITY

Clarity scale table with categories FL, IF, VS 1-2, VS 1-2, SI 1-2, I 1-3, Flawless, Internally Flawless, Very Very Slightly Included, Very Slightly Included, Slightly Included, Included.

