



**ELECTRONIC COPY**

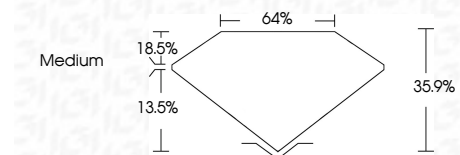
LG792614636  
Report verification at igi.org



April 17, 2026  
IGI Report Number **LG792614636**  
Description **LABORATORY GROWN DIAMOND**  
Shape and Cutting Style **EMERALD ROSE CUT**  
Measurements **8.05 X 5.88 X 2.11 MM**

**GRADING RESULTS**

Carat Weight **1.22 CARAT**  
Color Grade **D**  
Clarity Grade **VVS 2**



**ADDITIONAL GRADING INFORMATION**

Polish **EXCELLENT**  
Symmetry **EXCELLENT**  
Fluorescence **NONE**  
Inscription(s) **IGI LG792614636**  
Comments: This Laboratory Grown Diamond was created by Chemical Vapor Deposition (CVD) growth process. Type IIa



April 17, 2026  
IGI Report No LG792614636  
**EMERALD ROSE CUT**  
8.05 X 5.88 X 2.11 MM  
1.22 CARAT  
D  
VVS 2  
85.9%  
4/6%  
Medium  
EXCELLENT  
EXCELLENT  
NONE  
IGI LG792614636  
Comments: This Laboratory Grown Diamond was created by Chemical Vapor Deposition (CVD) growth process. Type IIa

**LABORATORY GROWN DIAMOND REPORT**

April 17, 2026  
IGI Report Number **LG792614636**  
Description **LABORATORY GROWN DIAMOND**  
Shape and Cutting Style **EMERALD ROSE CUT**  
Measurements **8.05 X 5.88 X 2.11 MM**

**GRADING RESULTS**

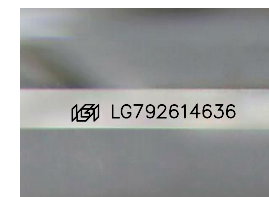
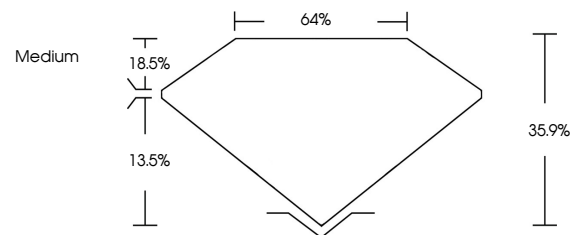
Carat Weight **1.22 CARAT**  
Color Grade **D**  
Clarity Grade **VVS 2**

**ADDITIONAL GRADING INFORMATION**

Polish **EXCELLENT**  
Symmetry **EXCELLENT**  
Fluorescence **NONE**  
Inscription(s) **IGI LG792614636**

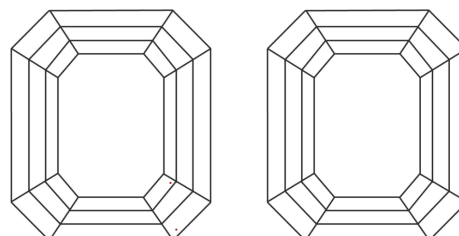
Comments: This Laboratory Grown Diamond was created by Chemical Vapor Deposition (CVD) growth process. Type IIa

**PROPORTIONS**



Sample Image Used

**CLARITY CHARACTERISTICS**



**KEY TO SYMBOLS**

Red symbols indicate internal characteristics.  
Green symbols indicate external characteristics.

**COLOR**

D E F G H I J Faint Very Light Light

**CLARITY**

FL	IF	VVS <sup>1-2</sup>	VS <sup>1-2</sup>	SI <sup>1-2</sup>	I <sup>1-3</sup>
Flawless	Internally Flawless	Very Very Slightly Included	Very Slightly Included	Slightly Included	Included

