



May 13, 2026

IGI Report Number **LG792614205**

LOZENGE STEP CUT

LABORATORY GROWN DIAMOND

5.55 X 5.40 X 3.53 MM

Carat Weight **0.96 CARAT**

Color Grade **E**

Clarity Grade **VS 1**

Polish **EXCELLENT**

Symmetry **EXCELLENT**

Fluorescence **NONE**

Inscription(s) **IGI LG792614205**

Comments: This Laboratory Grown Diamond was created by Chemical Vapor Deposition (CVD) growth process. Type IIa

LABORATORY GROWN DIAMOND REPORT

May 13, 2026

IGI Report Number

LG792614205

Description

LABORATORY GROWN DIAMOND

Shape and Cutting Style

LOZENGE STEP CUT

Measurements

5.55 X 5.40 X 3.53 MM

GRADING RESULTS

Carat Weight

0.96 CARAT

Color Grade

E

Clarity Grade

VS 1

ADDITIONAL GRADING INFORMATION

Polish

EXCELLENT

Symmetry

EXCELLENT

Fluorescence

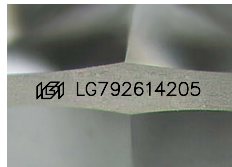
NONE

Inscription(s)

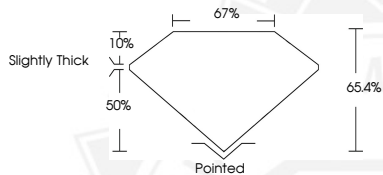
IGI LG792614205

Comments: This Laboratory Grown Diamond was created by Chemical Vapor Deposition (CVD) growth process.

Type IIa



Sample Image Used



May 13, 2026

IGI Report Number **LG792614205**

LOZENGE STEP CUT

LABORATORY GROWN DIAMOND

5.55 X 5.40 X 3.53 MM

Carat Weight **0.96 CARAT**

Color Grade **E**

Clarity Grade **VS 1**

Polish **EXCELLENT**

Symmetry **EXCELLENT**

Fluorescence **NONE**

Inscription(s) **IGI LG792614205**

Comments: This Laboratory Grown Diamond was created by Chemical Vapor Deposition (CVD) growth process. Type IIa



THIS DOCUMENT WAS PRODUCED WITH THE FOLLOWING SECURITY MEASURES: SPECIAL DOCUMENT PAPER, INK SCREENS, WATERMARK, BACKGROUND DESIGNS, HOLOGRAM AND OTHER SECURITY FEATURES NOT LISTED AND DO EXCEED DOCUMENT SECURITY INDUSTRY GUIDELINES.