



ELECTRONIC COPY

LG792611210
Report verification at igi.org



May 5, 2026

IGI Report Number **LG792611210**

Description **LABORATORY GROWN DIAMOND**

Shape and Cutting Style **ROUND BRILLIANT**

Measurements **9.33 - 9.38 X 5.48 MM**

GRADING RESULTS

Carat Weight **3.00 CARATS**

Color Grade **LIGHT BROWN**

Clarity Grade **VS 2**

Cut Grade **VERY GOOD**

May 5, 2026
IGI Report Number **LG792611210**
Description **LABORATORY GROWN DIAMOND**
Shape and Cutting Style **ROUND BRILLIANT**
Measurements **9.33 - 9.38 X 5.48 MM**

GRADING RESULTS

Carat Weight **3.00 CARATS**

Color Grade **LIGHT BROWN**

Clarity Grade **VS 2**

Cut Grade **VERY GOOD**

ADDITIONAL GRADING INFORMATION

Polish **EXCELLENT**

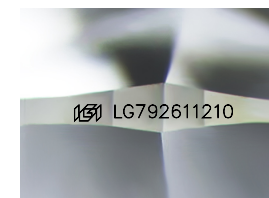
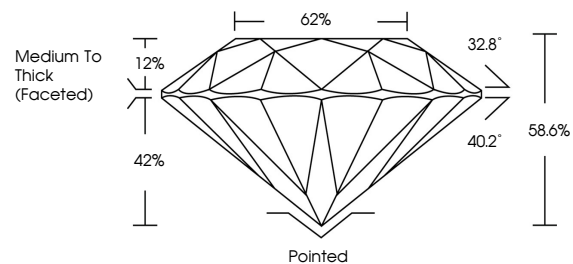
Symmetry **EXCELLENT**

Fluorescence **VERY SLIGHT**

Inscription(s) **LG792611210**

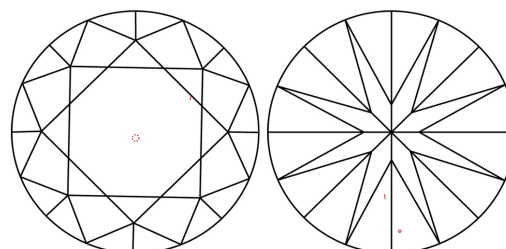
Comments: This Laboratory Grown Diamond was created by Chemical Vapor Deposition (CVD) growth process.

PROPORTIONS



Sample Image Used

CLARITY CHARACTERISTICS



KEY TO SYMBOLS

Red symbols indicate internal characteristics.
Green symbols indicate external characteristics.

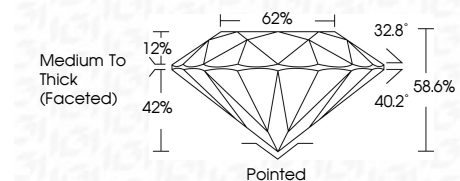
COLOR

D E F G H I J Faint Very Light Light

CLARITY

FL IF VS¹⁻² VS¹⁻² SI¹⁻² I¹⁻³

Flawless Internally Flawless Very Very Slightly Included Very Slightly Included Slightly Included Included



ADDITIONAL GRADING INFORMATION

Polish **EXCELLENT**

Symmetry **EXCELLENT**

Fluorescence **VERY SLIGHT**

Inscription(s) **LG792611210**

Comments: This Laboratory Grown Diamond was created by Chemical Vapor Deposition (CVD) growth process.



IGI



May 5, 2026
IGI Report No LG792611210
ROUND BRILLIANT
3.00 CARATS
Carat Weight
Color Grade **LIGHT BROWN**
Clarity Grade **VS 2**
Depth **58.6%**
Table **62%**
Girdle **Medium To Thick (Faceted)**
Culet **Pointed**
Polish **EXCELLENT**
Symmetry **EXCELLENT**
Fluorescence **VERY SLIGHT**
Inscription(s) **LG792611210**
Comments: This Laboratory Grown Diamond was created by Chemical Vapor Deposition (CVD) growth process.