



ELECTRONIC COPY

LG792611180
Report verification at igi.org



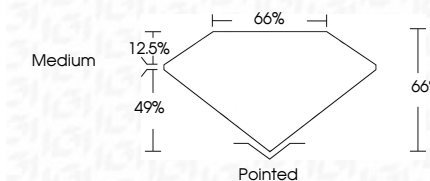
April 20, 2026
IGI Report Number **LG792611180**
Description **LABORATORY GROWN DIAMOND**

Shape and Cutting Style **CUT CORNERED
RECTANGULAR MODIFIED
BRILLIANT**

Measurements **8.33 X 5.92 X 3.91 MM**

GRADING RESULTS

Carat Weight **1.79 CARAT**
Color Grade **FANCY VIVID BLUE**
Clarity Grade **VS 1**



ADDITIONAL GRADING INFORMATION

Polish **EXCELLENT**
Symmetry **EXCELLENT**
Fluorescence **NONE**
Inscription(s) **IGI LG792611180**

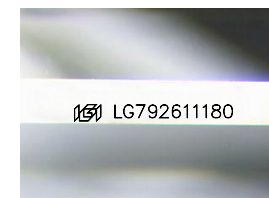
Comments: This Laboratory Grown Diamond was created by Chemical Vapor Deposition (CVD) growth process. Indications of post-growth treatment.



IGI

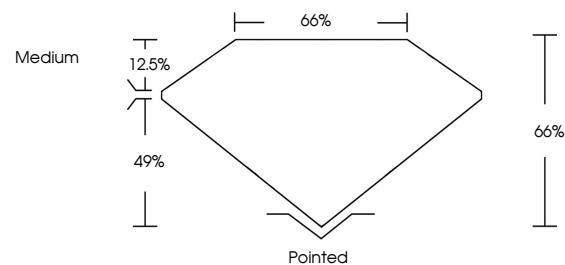
April 20, 2026
IGI Report No LG792611180
CUT CORNERED RECT. MODIFIED BRILLIANT
8.33 X 5.92 X 3.91 MM
1.79 CARAT
FANCY VIVID BLUE
VS 1
66%
66%
Medium
Pointed
EXCELLENT
EXCELLENT
NONE
IGI LG792611180

Comments: This Laboratory Grown Diamond was created by Chemical Vapor Deposition (CVD) growth process. Indications of post-growth treatment.

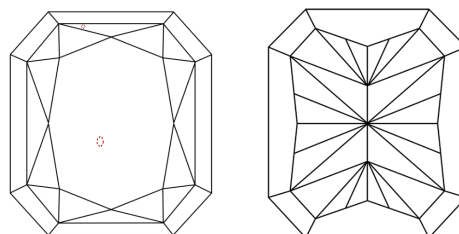


Sample Image Used

PROPORTIONS



CLARITY CHARACTERISTICS



KEY TO SYMBOLS

Red symbols indicate internal characteristics.
Green symbols indicate external characteristics.

COLOR

D E F G H I J Faint Very Light Light

CLARITY

FL	IF	VS ¹⁻²	VS ¹⁻²	SI ¹⁻²	I ¹⁻³
Flawless	Internally Flawless	Very Very Slightly Included	Very Slightly Included	Slightly Included	Included

