



ELECTRONIC COPY

LG792609612
Report verification at igi.org



April 15, 2026

IGI Report Number **LG792609612**

Description **LABORATORY GROWN DIAMOND**

Shape and Cutting Style **ROUND BRILLIANT**

Measurements **6.41 - 6.44 X 3.95 MM**

GRADING RESULTS

Carat Weight **1.00 CARAT**

Color Grade **D**

Clarity Grade **VVS 2**

Cut Grade **IDEAL**

April 15, 2026

IGI Report Number **LG792609612**

Description **LABORATORY GROWN DIAMOND**

Shape and Cutting Style **ROUND BRILLIANT**

Measurements **6.41 - 6.44 X 3.95 MM**

GRADING RESULTS

Carat Weight **1.00 CARAT**

Color Grade **D**

Clarity Grade **VVS 2**

Cut Grade **IDEAL**

ADDITIONAL GRADING INFORMATION

Polish **EXCELLENT**

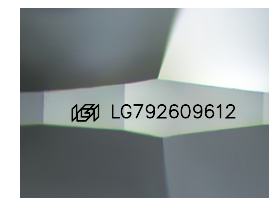
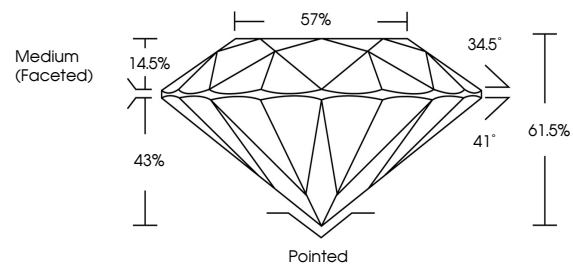
Symmetry **EXCELLENT**

Fluorescence **NONE**

Inscription(s) **IGI LG792609612**

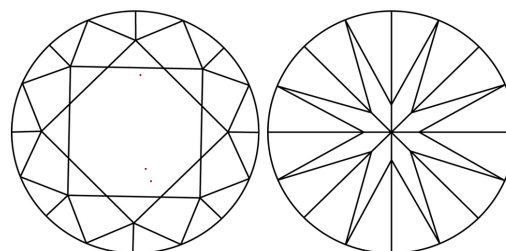
Comments: This Laboratory Grown Diamond was created by Chemical Vapor Deposition (CVD) growth process. Type IIa

PROPORTIONS



Sample Image Used

CLARITY CHARACTERISTICS



KEY TO SYMBOLS

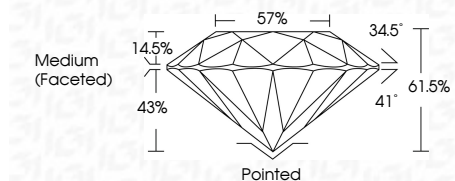
Red symbols indicate internal characteristics.
Green symbols indicate external characteristics.

COLOR

D E F G H I J Faint Very Light Light

CLARITY

| FL | IF | VVS ¹⁻² | VS ¹⁻² | SI ¹⁻² | I ¹⁻³ |
|----------|---------------------|-----------------------------|------------------------|-------------------|------------------|
| Flawless | Internally Flawless | Very Very Slightly Included | Very Slightly Included | Slightly Included | Included |



ADDITIONAL GRADING INFORMATION

Polish **EXCELLENT**

Symmetry **EXCELLENT**

Fluorescence **NONE**

Inscription(s) **IGI LG792609612**

Comments: This Laboratory Grown Diamond was created by Chemical Vapor Deposition (CVD) growth process. Type IIa



IGI



| | | | | | | | | |
|-----------------|---------------------------|----------------|-------|---|-----------|----------------|-----------------|------------------|
| April 15, 2026 | IGI Report No LG792609612 | 1.00 CARAT | D | Pointed | EXCELLENT | EXCELLENT | NONE | IGI LG792609612 |
| ROUND BRILLIANT | 6.41 - 6.44 X 3.95 MM | Color Grade | VVS 2 | Cut Grade | IDEAL | 61.5% | 57% | Medium (Faceted) |
| | | Clarity Grade | IDEAL | Polish | EXCELLENT | Symmetry | EXCELLENT | NONE |
| | | Depth | 43% | Fluorescence | NONE | Inscription(s) | IGI LG792609612 | |
| | | Table | 14.5% | Comments: This Laboratory Grown Diamond was created by Chemical Vapor Deposition (CVD) growth process. Type IIa | | | | |
| | | Crown Angle | 34.5° | | | | | |
| | | Pavilion Angle | 41° | | | | | |
| | | Total Depth | 61.5% | | | | | |

Certified
**SUSTAINABILITY RATED
DIAMOND**
SCS GLOBAL SERVICES

All certified diamonds come with an individual certificate, **ONLY** available at an accredited retailer

FOR THE SUSTAINABILITY RATED CERTIFICATE, SCAN HERE →