



ELECTRONIC COPY

LG792607950
Report verification at igi.org



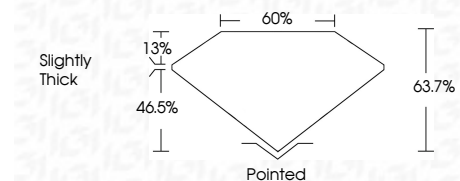
April 17, 2026
IGI Report Number LG792607950
Description LABORATORY GROWN DIAMOND

Shape and Cutting Style CUT CORNERED RECTANGULAR MODIFIED BRILLIANT

Measurements 10.13 X 6.73 X 4.29 MM

GRADING RESULTS

Carat Weight 2.65 CARATS
Color Grade FANCY INTENSE PINK
Clarity Grade VVS 2



ADDITIONAL GRADING INFORMATION

Polish EXCELLENT
Symmetry EXCELLENT
Fluorescence SLIGHT
Inscription(s) IGI LG792607950

Comments: This Laboratory Grown Diamond was created by Chemical Vapor Deposition (CVD) growth process. Indications of post-growth treatment.



April 17, 2026
IGI Report No LG792607950
CUT CORNERED RECT. MODIFIED BRILLIANT
10.13 X 6.73 X 4.29 MM
2.65 CARATS
FANCY INTENSE PINK
VVS 2
63.7%
Slightly Thick
Pointed
EXCELLENT
EXCELLENT
SLIGHT
IGI LG792607950
Comments: This Laboratory Grown Diamond was created by Chemical Vapor Deposition (CVD) growth process. Indications of post-growth treatment.

LABORATORY GROWN DIAMOND REPORT

April 17, 2026
IGI Report Number LG792607950
Description LABORATORY GROWN DIAMOND
Shape and Cutting Style CUT CORNERED RECTANGULAR MODIFIED BRILLIANT
Measurements 10.13 X 6.73 X 4.29 MM

GRADING RESULTS

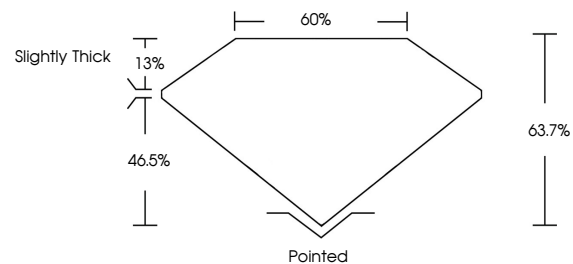
Carat Weight 2.65 CARATS
Color Grade FANCY INTENSE PINK
Clarity Grade VVS 2

ADDITIONAL GRADING INFORMATION

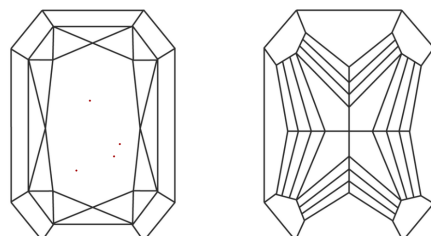
Polish EXCELLENT
Symmetry EXCELLENT
Fluorescence SLIGHT
Inscription(s) IGI LG792607950

Comments: This Laboratory Grown Diamond was created by Chemical Vapor Deposition (CVD) growth process. Indications of post-growth treatment.

PROPORTIONS

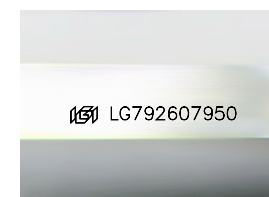


CLARITY CHARACTERISTICS



KEY TO SYMBOLS

Red symbols indicate internal characteristics.
Green symbols indicate external characteristics.



Sample Image Used

COLOR

D E F G H I J Faint Very Light Light

CLARITY

FL IF VVS 1-2 VS 1-2 SI 1-2 I 1-3
Flawless Internally Flawless Very Very Slightly Included Very Slightly Included Slightly Included Included

