



**ELECTRONIC COPY**

LG792606650  
Report verification at igi.org



April 21, 2026  
IGI Report Number **LG792606650**  
Description **LABORATORY GROWN DIAMOND**  
Shape and Cutting Style **ROUND BRILLIANT**  
Measurements **9.12 - 9.17 X 5.68 MM**  
**GRADING RESULTS**  
Carat Weight **2.99 CARATS**  
Color Grade **F**  
Clarity Grade **VS 1**  
Cut Grade **EXCELLENT**

April 21, 2026  
IGI Report Number **LG792606650**  
Description **LABORATORY GROWN DIAMOND**  
Shape and Cutting Style **ROUND BRILLIANT**  
Measurements **9.12 - 9.17 X 5.68 MM**

**GRADING RESULTS**

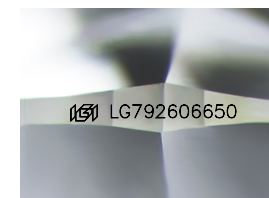
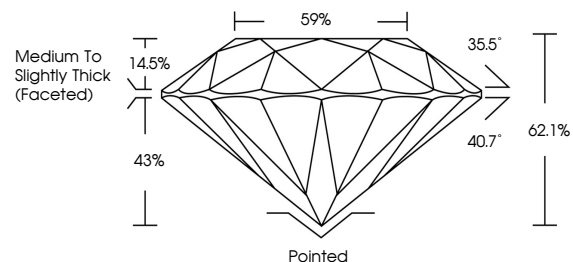
Carat Weight **2.99 CARATS**  
Color Grade **F**  
Clarity Grade **VS 1**  
Cut Grade **EXCELLENT**

**ADDITIONAL GRADING INFORMATION**

Polish **EXCELLENT**  
Symmetry **EXCELLENT**  
Fluorescence **NONE**  
Inscription(s) **IGI LG792606650**

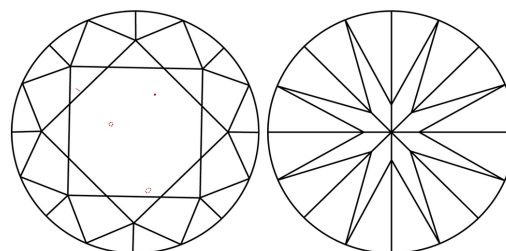
Comments: This Laboratory Grown Diamond was created by Chemical Vapor Deposition (CVD) growth process. Type IIa

**PROPORTIONS**



Sample Image Used

**CLARITY CHARACTERISTICS**



**KEY TO SYMBOLS**

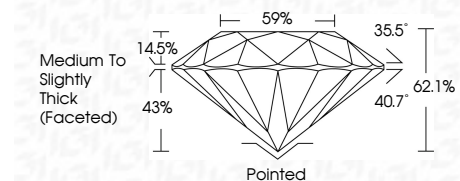
Red symbols indicate internal characteristics.  
Green symbols indicate external characteristics.

**COLOR**

D E F G H I J Faint Very Light Light

**CLARITY**

FL	IF	VS <sup>1-2</sup>	VS <sup>1-2</sup>	SI <sup>1-2</sup>	I <sup>1-3</sup>
Flawless	Internally Flawless	Very Very Slightly Included	Very Slightly Included	Slightly Included	Included



**ADDITIONAL GRADING INFORMATION**

Polish **EXCELLENT**  
Symmetry **EXCELLENT**  
Fluorescence **NONE**  
Inscription(s) **IGI LG792606650**  
Comments: This Laboratory Grown Diamond was created by Chemical Vapor Deposition (CVD) growth process. Type IIa



**IGI**



April 21, 2026  
IGI Report No LG792606650  
**ROUND BRILLIANT**  
9.12 - 9.17 X 5.68 MM  
2.99 CARATS  
F  
Color Grade  
VS 1  
Clarity Grade  
EXCELLENT  
62.1%  
59%  
Depth  
Table  
Girdle  
Medium To Slightly Thick (Faceted)  
Pointed  
EXCELLENT  
Symmetry  
EXCELLENT  
Fluorescence  
NONE  
Inscription(s)  
IGI LG792606650  
Comments: This Laboratory Grown Diamond was created by Chemical Vapor Deposition (CVD) growth process. Type IIa