



**INTERNATIONAL
GEMOLOGICAL
INSTITUTE**

ELECTRONIC COPY



April 23, 2026

IGI Report Number **LG792605615**

ROUND BRILLIANT

LABORATORY GROWN DIAMOND

6.40 - 6.43 X 3.86 MM

Carat Weight **0.95 CARAT**

Color Grade **FANCY VIVID PINK**

Clarity Grade **VS 1**

Cut Grade **IDEAL**

Polish **VERY GOOD**

Symmetry **EXCELLENT**

Fluorescence **SLIGHT**

Inscription(s) **IGI LG792605615**

Comments: This Laboratory Grown Diamond was created by Chemical Vapor Deposition (CVD) growth process. Indications of post-growth treatment.

LABORATORY GROWN DIAMOND REPORT

April 23, 2026

IGI Report Number

LG792605615

Description

LABORATORY GROWN DIAMOND

Shape and Cutting Style

ROUND BRILLIANT

Measurements

6.40 - 6.43 X 3.86 MM

GRADING RESULTS

Carat Weight

0.95 CARAT

Color Grade

FANCY VIVID PINK

Clarity Grade

VS 1

Cut Grade

IDEAL

ADDITIONAL GRADING INFORMATION

Polish

VERY GOOD

Symmetry

EXCELLENT

Fluorescence

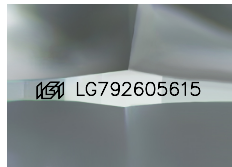
SLIGHT

Inscription(s)

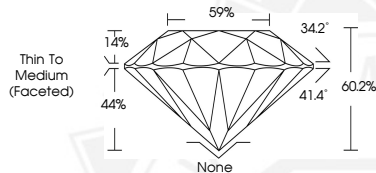
IGI LG792605615

Comments: This Laboratory Grown Diamond was created by Chemical Vapor Deposition (CVD) growth process.

Indications of post-growth treatment.



Sample Image Used



April 23, 2026

IGI Report Number **LG792605615**

ROUND BRILLIANT

LABORATORY GROWN DIAMOND

6.40 - 6.43 X 3.86 MM

Carat Weight **0.95 CARAT**

Color Grade **FANCY VIVID PINK**

Clarity Grade **VS 1**

Cut Grade **IDEAL**

Polish **VERY GOOD**

Symmetry **EXCELLENT**

Fluorescence **SLIGHT**

Inscription(s) **IGI LG792605615**

Comments: This Laboratory Grown Diamond was created by Chemical Vapor Deposition (CVD) growth process. Indications of post-growth treatment.



THIS DOCUMENT WAS PRODUCED WITH THE FOLLOWING SECURITY MEASURES: SPECIAL DOCUMENT PAPER, INK SCREENS, WATERMARK, BACKGROUND DESIGNS, HOLOGRAM AND OTHER SECURITY FEATURES NOT LISTED AND DO EXCEED DOCUMENT SECURITY INDUSTRY GUIDELINES.

For terms & conditions and to verify this report, please visit www.igi.org