



ELECTRONIC COPY

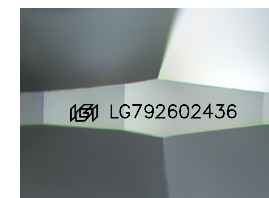
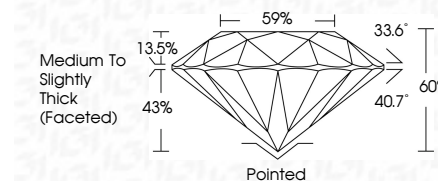
LG792602436
Report verification at igi.org



April 14, 2026
IGI Report Number LG792602436
Description LABORATORY GROWN DIAMOND
Shape and Cutting Style ROUND BRILLIANT
Measurements 7.32 - 7.36 X 4.40 MM

GRADING RESULTS

Carat Weight 1.45 CARAT
Color Grade F
Clarity Grade VVS 2
Cut Grade IDEAL



Sample Image Used

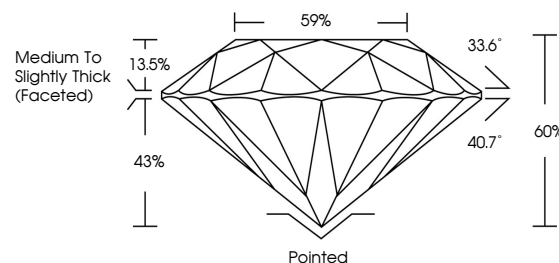
ADDITIONAL GRADING INFORMATION

Polish EXCELLENT
Symmetry EXCELLENT
Fluorescence NONE
Inscription(s) IGI LG792602436
Comments: This Laboratory Grown Diamond was created by Chemical Vapor Deposition (CVD) growth process. Type IIa

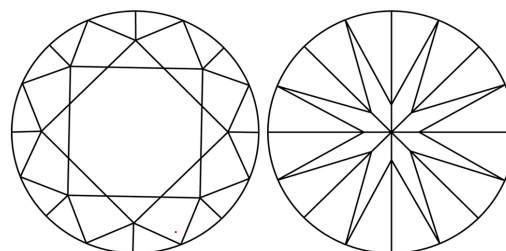


April 14, 2026
IGI Report No LG792602436
ROUND BRILLIANT
1.45 CARAT
F
7.32 - 7.36 X 4.40 MM
Carat Weight
Color Grade VVS 2
Clarity Grade IDEAL
Depth 65%
Table 59%
Medium To Slightly Thick (Faceted)
Girdle
Culet Pointed
Polish EXCELLENT
Symmetry EXCELLENT
Fluorescence NONE
Inscription(s) IGI LG792602436
Comments: This Laboratory Grown Diamond was created by Chemical Vapor Deposition (CVD) growth process. Type IIa

PROPORTIONS



CLARITY CHARACTERISTICS



KEY TO SYMBOLS

Red symbols indicate internal characteristics.
Green symbols indicate external characteristics.

COLOR

D E F G H I J Faint Very Light Light

CLARITY

FL IF VVS 1-2 VS 1-2 SI 1-2 I 1-3
Flawless Internally Flawless Very Very Slightly Included Very Slightly Included Slightly Included Included

