



**ELECTRONIC COPY**

LG791663623  
Report verification at igi.org



April 22, 2026

IGI Report Number **LG791663623**

Description **LABORATORY GROWN DIAMOND**

Shape and Cutting Style **PRINCESS CUT**

Measurements **5.61 X 5.42 X 4.00 MM**

**GRADING RESULTS**

Carat Weight **1.05 CARAT**

Color Grade **D**

Clarity Grade **VS 1**

April 22, 2026

IGI Report Number **LG791663623**

Description **LABORATORY GROWN DIAMOND**

Shape and Cutting Style **PRINCESS CUT**

Measurements **5.61 X 5.42 X 4.00 MM**

**GRADING RESULTS**

Carat Weight **1.05 CARAT**

Color Grade **D**

Clarity Grade **VS 1**

**ADDITIONAL GRADING INFORMATION**

Polish **EXCELLENT**

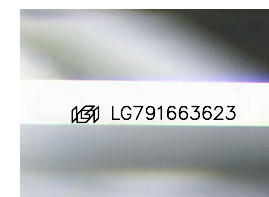
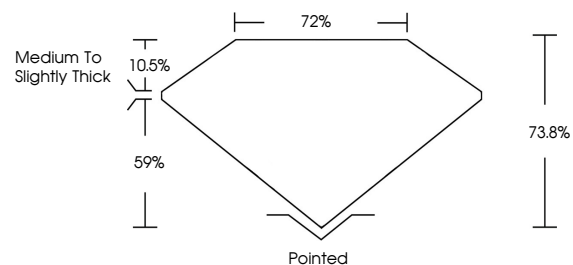
Symmetry **EXCELLENT**

Fluorescence **NONE**

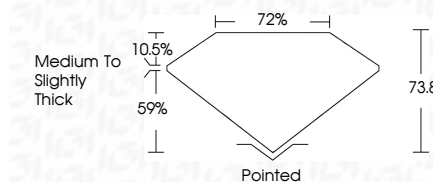
Inscription(s) **IGI LG791663623**

Comments: This Laboratory Grown Diamond was created by Chemical Vapor Deposition (CVD) growth process. Type IIa

**PROPORTIONS**



Sample Image Used



**COLOR**

D E F G H I J Faint Very Light Light

**CLARITY**

FL	IF	VS <sup>1-2</sup>	VS <sup>1-2</sup>	SI <sup>1-2</sup>	I <sup>1-3</sup>
Flawless	Internally Flawless	Very Very Slightly Included	Very Slightly Included	Slightly Included	Included

**ADDITIONAL GRADING INFORMATION**

Polish **EXCELLENT**

Symmetry **EXCELLENT**

Fluorescence **NONE**

Inscription(s) **IGI LG791663623**

Comments: This Laboratory Grown Diamond was created by Chemical Vapor Deposition (CVD) growth process. Type IIa



**IGI**



April 22, 2026  
IGI Report No LG791663623  
PRINCESS CUT  
5.61 X 5.42 X 4.00 MM  
1.05 CARAT  
Color Grade D  
Clarity Grade VS 1  
Table 72%  
Depth 10.5%  
Girdle Medium to Slightly Thick  
Culet Pointed  
Polish EXCELLENT  
Symmetry EXCELLENT  
Fluorescence NONE  
Inscription(s) IGI LG791663623

Comments: This Laboratory Grown Diamond was created by Chemical Vapor Deposition (CVD) growth process. Type IIa